

**HIGH PEAK BOROUGH COUNCIL**  
**(OFF-STREET PARKING PLACES)**  
**ORDER 2018**

High Peak Borough Council (hereinafter called "the Council") in exercise of its powers under Sections 32, 33, 35 and Schedule 9 of the Road Traffic Regulation Act 1984, as amended ("the 1984 Act"), and under the Traffic Management Act 2004 as amended ("the 2004 Act") and of all other enabling powers, after consultation with Derbyshire County Council and the Chief Constable of Derbyshire Constabulary hereby makes the following Order:

**PART 1**  
**GENERAL**

**Commencement and Citation**

1. This Order shall come into operation on the **first** day of **April** 2018 and may be cited as the High Peak Borough Council (Off-Street Parking Places) Order 2018. The High Peak Borough Council (Off-Street Parking Places) Order 2018 Plans are incorporated into this Order at Schedule 1.

**Interpretation**

2. In this Order, except where the context otherwise requires, the following expressions have the meanings respectively assigned to them:

"Alternative Approved Method of Payment" means to obtain a virtual parking permit through cashless payments, pay by phone, payment by debit or credit card facilitated by on site or remote verification by, for example, card reader or mobile phone, text or phone call or decrementing card;

"Authorised Officer" means a person authorised by or on behalf of the Council to supervise the Parking Places and enforce the restrictions imposed and the contraventions created by this Order;

"Bank Holiday" has the same meaning as described in the Banking and Financial Dealings Act 1971 (C.80). The first Monday of May shall be treated as if it were a Bank Holiday for the purposes of this Order;

"Charging Days", means those days specified at each parking place and in Schedule 2 to this Order as amended from time to time other than Christmas Day and Easter Sunday;

"Charging Hours", means the period as specified at each Parking Place and in the Schedule 2 to this Order as amended from time to time on all charging days;

"Council" means High Peak Borough Council or its successor authority;

"Daily Charge" means the charge imposed by the Council for Parking in a Parking Place on any one day and for a specified period of time as is identified in the scale of charges specified by notice on site and in Schedule 2 to this Order as amended from time to time;

"Disabled Person's Badge" means a badge issued by any Local Authority in accordance with the provisions of the Local Authorities' Traffic Orders (Exemptions for Disabled Persons) (England) Regulations 2000 or a badge having effect under those regulations as if it were a Disabled Person's Badge;

"Display" means to physically display a ticket or relevant permit on a vehicle or where a virtual parking permit has been obtained then "display" in this instance means that the permit is displayed on the software system of the Authority;

"Driver" in relation to a Parking Place means the person driving the Vehicle at the time it was left in the Parking Place;

"Electric Vehicle" means an automobile that is powered entirely or partially by electricity and is capable of being charged from an external source.

"Electric Vehicle parking place" means a parking place designated for use as an Electric Vehicle charging point for use by Electric Vehicles only;

“Electric Vehicle charging point” means a purpose-built apparatus designed specifically, for the charging of an Electric Vehicle;

“Expiry Time” is the time indicated on the Pay and Display Ticket and is the time by which the Vehicle must leave the Parking Place;

“Hackney Carriage” means a vehicle licensed under section 37 of the Town Police Clauses Act 1847;

“Light Goods Vehicle” means a Vehicle which is constructed or adapted for use for the carriage of goods or burden of any description, the overall height of which does not exceed 1.85 metres and the unladen weight of which does not exceed 3050 kilograms and is not drawing a trailer;

“Loading/Unloading” refers to when a Vehicle is Parked wholly in a Loading Bay, Parking Place or Parking Bay marked for that purpose on site, for the purpose of delivering or collecting goods or merchandise or loading or unloading the Vehicle at premises adjacent to the Loading Bay, Parking Place or Parking Bay and the Vehicle does not Park for more than twenty minutes or such longer period as a duly authorised officer of the Council may authorise;

“Loading Bay” means an area of a Parking Place which is provided for the leaving of a Vehicle of a class specified and indicated by markings on the surface of the Parking Place or Parking Bay or signed or otherwise indicated by signs in the Parking Place or Parking Bay to undertake Loading and Unloading of goods;

“Market Trader” means an authorised person or body formally authorised and engaged to stand on a specific market event by the Council;

“Market Trader Vehicles” means a Vehicle belonging or used by a person or persons wholly employed in the provision of a market as a market trader on market days;

"Market Trader Permit" means a Permit belonging or used by a person or persons wholly employed in the provision of a market as a market trader on market days in the appropriate car parks and to be accompanied by the appropriate pay and display ticket at the tariffs as detailed in Schedule 2;

"Motor Cycle" refers to a solo motorcycle only and excludes any motor cycle which has a side-car or trailer, or which has more than two wheels;

"Owner" in relation to a Vehicle means the person who is recorded as the registered keeper by the Driver and Vehicle Licensing Agency on the date on which the Vehicle was Parked in the Parking Place in question;

"Park", "Parked" and "Parking" refer to the stopping of a Vehicle and it remaining at rest other than momentarily whether or not the driver is still in the Vehicle. A Vehicle shall be deemed to be Parked for any period in the same Parking Place or Parking Bay (as the case may be) if any part of the Parking Place or Parking Bay is below the Vehicle or the Vehicle's load (if any) whether or not the Vehicle is moved during that period;

"Parking Bay" means an area of a Parking Place, which is provided for the leaving of a Vehicle of a class specified and indicated by markings on the surface of the Parking Place or signed or otherwise indicated by signs in the Parking Place;

"Parking Permit" means a season ticket, market traders permit, contract permit, business permit, rover pass, staff permit, resident's permit, commuters permit, or visitor's permit of a type and design issued by the Council;

"Parking Place" means an area of land provided by the Council pursuant to Section 32(1) of the 1984 Act for the purpose of Parking of Vehicles and not closed (in part or in whole) by a notice, sign or barrier erected thereon by authority of the Council;



“Passenger Vehicle” means a Vehicle (other than a Motor Cycle) constructed or adapted solely for the carriage of not more than twelve passengers (exclusive of the driver) and their effects and not drawing a trailer;

“Pay and Display Ticket” means a ticket issued by a Ticket Machine located in the Parking Place in which the Vehicle has been Parked or issued by a person nominated by the Council on payment of a charge and valid for a parking period as advertised at that Parking Place;

“Pay on Foot” and “Pay on Exit” mean a Parking Place where a ticket is issued by a Ticket Machine located at the entrance to a Parking Place, the ticket is retained by the vehicle user and not displayed, and then the relevant charge is paid as required on site when returning to the vehicle or exiting the Parking Place;

“Penalty Charge” means a charge imposed in accordance with the provisions of the Traffic Management Act 2004 in respect of parking contraventions that are subject to civil enforcement and is applied as defined in the Civil Enforcement of Parking Contraventions (England) General Regulations 2007;

“Penalty Charge Notice” means a notice issued by or served by an Authorised Officer pursuant to the provisions of Civil Enforcement of Parking Contraventions (England) General Regulations 2007 or subsequent legislation;

“Permit” is as defined in Article 39.

“Plans” mean the High Peak Borough Council (Off-Street Parking Places) Order 2018 Plans annexed to this Order at Schedule 1 and which identify the Parking Places affected by this Order;

“Public Holiday” means Christmas Day, Good Friday and any other day designated by the Government as a public holiday;

“Public Service Vehicle” means a vehicle as defined in section 1 of the Public Passenger Vehicles Act 1981;

“Relevant Position” means:

- (a) in respect of a Vehicle displaying a valid Disabled Person’s Badge -
  - (i) in the case of a Vehicle fitted with a dashboard or fascia panel, the badge is exhibited thereon in compliance with relevant instructions on correct display issued by Department of Transport or subsequent issuing Authority, so is clearly legible from outside the Vehicle; or
  - (ii) in the case of a Vehicle not fitted with a dashboard or fascia panel, the badge is exhibited in a conspicuous position on the Vehicle in compliance with relevant instructions on correct display issued by Department of Transport or subsequent issuing Authority so is clearly legible from outside the Vehicle;
- (b) in respect of a Vehicle displaying a Pay and Display Ticket or Parking Permit -
  - (i) the ticket or permit is exhibited on the inside surface of the windscreen or in a clearly visible position so that it is facing forwards and can be easily seen and read from the front or side of the Vehicle; or
  - (ii) in the case of a Vehicle that is not fitted with a transparent windscreen, the ticket or permit is exhibited on the front of the Vehicle facing forwards and clearly visible; or
- (c) in respect of a Vehicle displaying a Hackney Carriage plate
  - (i) the plate must be affixed to the Vehicle in accordance with the instructions given within the licence as issued by the Council or other appropriate issuing Local Authority;

“Ticket Machine” means an apparatus of a type and design approved by the appropriate Minister for the purpose of the 1984 Act, being apparatus designed to indicate the time by a clock and to issue Pay and Display Tickets which show that a payment has been made of an amount or for a period specified thereon and which specify the date and, either the time of such payment, or the expiry time of the parking period for which payment has been made;

"Time clock" means a clock issued with a disabled badge to display the time of arrival for any parking period where the disabled badge is being used.

"Vehicle" includes any passenger vehicle, Motor Cycle, Public Service Vehicle (PSV) or other mechanically propelled automobile;

"Virtual Parking Permit" means an electronic record of parking ticket, permit or dispensation issued and confirmed by the Council to exempt a vehicle from a restriction in the provisions of this Order, under the terms applicable at the time of issue without the need to physically display;

3. Except where the context requires otherwise, any reference in this Order to a numbered Article shall be construed as a reference to the Article bearing that number in this Order and any reference to a plan is a reference to the Plans Incorporated into this Order.
4. Any reference in this Order to any enactment shall be construed as a reference to that enactment as amended, applied, consolidated, re-enacted by or as having effect by virtue of any subsequent enactment.
5. Unless the context otherwise requires, words denoting the singular shall include the plural and vice versa and words denoting the persons shall include either gender, bodies corporate, unincorporated associations and partnerships.
6. The Interpretation Act 1978 shall apply for the interpretation of this Order.

## **PART 2**

### **DESIGNATION AND USE OF PARKING PLACES**

#### Designation

7. Each area of land or buildings specified by the Plans and detailed in Schedule 1 to this Order may be used, subject to the provisions of this Order, as a place to Park Vehicles of such classes, in such positions, on such days, during such hours, for such period and on payment of such charges as are advertised at

each Parking Place and in Schedule 2 to this Order as amended from time to time.

#### Class and position of Vehicle

8. Where by notice at a Parking Place, the Parking Place or any Parking Bay within the Parking Place is described as available for Vehicles of a specified class or Vehicles to be Parked in a specified location, no person shall cause or permit a Vehicle to be Parked in that Parking Place or in any Parking Bay within the Parking Place:
- (i) unless it is of the specified class;
  - (ii) that is Parked beyond the Parking Bay markings;
  - (iii) in a position other than that specified; or
  - (iv) for a purpose other than provided for in this Order.

#### Classes of Vehicle

9. No person shall cause or permit a Vehicle to be Parked in a Parking Bay unless it is a class of vehicle specified in the schedules to this Order or as displayed on site.

#### Position of Vehicle

10. If Parking Bays are marked out in a Parking Place the driver of a Vehicle shall ensure that it is parked correctly and wholly within the markings of a bay or space and shall not permit it to Park in that Parking Place unless it is so positioned.
11. If Parking Bays are not marked out in a Parking Place the driver of a Vehicle shall ensure that it is positioned so that it does not obstruct other Vehicles using the Parking Place, the free flow of traffic circulating within the Parking Place and the entrances to and exits from the Parking Place.

#### Disabled person's Parking Bays

12. No person shall cause or permit a Vehicle to be Parked in a Parking Bay marked for disabled persons unless the Vehicle displays a valid Disabled Person's Badge in the Relevant Position and immediately before or immediately after the act of Parking the Vehicle has been or is about to be used by the person(s) in respect of whom the Disabled Person's Badge has been issued.

#### Permit Parking Bays

13. No person shall cause or permit a Vehicle to Park in a Parking Bay marked for permit holders unless the Vehicle is displaying a Parking Permit or has a Virtual Parking Permit valid for that time, that Vehicle and that Parking Bay in accordance with the terms set out in this Order.

#### Taxi bays

14. No person shall cause or permit a Vehicle to be Parked in an area marked as a taxi bay unless the Vehicle displays in the relevant position a valid Hackney Carriage plate issued by the relevant issuing Local Authority and shall be accompanied by the registered taxi driver at all times whilst parked in taxi bay

#### Loading and unloading bays

15. No person shall cause or permit a Vehicle to Park in any area marked as a loading bay unless the Vehicle is being used for the purpose of Loading or Unloading.

#### Motor Cycle Parking bays

16. No person shall cause or permit a Vehicle to Park in a Parking Bay marked for Motor Cycles unless the Vehicle is a Motor Cycle.

#### Public Service Vehicle parking bays

17. No person shall cause or permit to Park in a Parking Bay marked for Public Service Vehicles unless the vehicle is a Public Service Vehicle.

#### Electric Vehicle Charging Point bays

18. No person shall cause or permit a vehicle to Park in a Parking Bay marked as an Electric Vehicle Charging Point bay unless the vehicle is an Electric Vehicle.
19. Subject to Article 18 of this Order, no person shall cause or permit an Electric Vehicle to park in a Parking Bay marked as an Electric Vehicle Charging Point bay unless the vehicle is charging.

#### Hours of Operation and Maximum Period of Stay

20. Where by notice on site, a Parking Place or in any Parking Bay within the Parking Place is described as being in operation on specified days, during specified hours or for a maximum period of stay, no person shall cause or permit a Vehicle to be Parked in that Parking Place or in any Parking Bay within the Parking Place on any day, during such hours or for any period other or longer than those specified unless authorised by relevant Authorised Officer.

#### Period of no return

21. Where by notice on site, a Parking Place is described as having a period within which a Vehicle may not return, no person shall cause or permit a Vehicle to be Parked again in that Parking Place on any day, during such hours within which the Vehicle is excluded from waiting in the Parking Place.

#### Power to close or suspend Parking Places

22. Nothing in this Order shall prevent the Council by notice, sign or barrier displayed in a Parking Place:
- (i) from closing a Parking Place or any part thereof for any period; and/or
  - (ii) from setting aside a Parking Place or any part or parts thereof on all days or on certain days or during certain parts of days for use only by particular Vehicles or organisations.
23. Any person closing or suspending the use of a Parking Place or any part thereof shall thereupon place or cause to be placed in or adjacent to that Parking Place or that part thereof a notice or traffic sign indicating that Parking Place or that part thereof is closed or the use is suspended and that Parking by Vehicles is prohibited.
24. No person shall cause or permit a Vehicle to be Parked in a Parking Place or any part thereof during such periods that the Parking Place or that part thereof is closed or the use is suspended or during such period as there is in or adjacent thereto a notice or traffic sign indicating the closure or suspension placed by or on behalf of the Council.

#### Sale of Goods

25. No person shall in a Parking Place without the express written permission of the Council, use a Vehicle, in connection with the sale of any article, including the Vehicle itself, to any person in or near the Parking Place or in connection with the selling or offering for hire of skill or services in any other capacity.

Parked with engine running

26. No person shall in a Parking Place continue to run the engine when the Vehicle is in the Parking Place and shall not start the engine except when about to change the position of the Vehicle in or to depart from the Parking Place.

Parked causing an obstruction

27. No person shall in a Parking Place Park the Vehicle in such a manner or place where it causes an obstruction to any other users of the Parking Place.

Rights of Way

28. No rights of way whatsoever over any parking place shall be deemed to have been granted by the Council by this Order.

**PART 3**  
**CHARGES FOR PARKING**

Payment

29. No person shall cause or permit any Vehicle to be Parked in a Parking Place without arranging for the appropriate charge (if any) to be paid in accordance with the scale of current charges as advertised at the Parking Place and as specified in Schedule 2 to this Order as amended by notice from time to time.

Means of payment

30. The charges referred to in the preceding Article shall be payable in the manner as advertised at that Parking Place and as specified in Schedule 2 to this Order as amended by notice from time to time.

### Pay and Display Parking Places / Pay on Exit / Pay on Foot Parking Places

31. Save where there is a valid Parking Permit or Virtual Parking Permit in force for a Vehicle the person in charge of a Vehicle, upon Parking the Vehicle in a Parking Bay, shall immediately:
- (i) arrange for the purchase of a Pay and Display Ticket from a Ticket Machine situated at that Parking Place at the level of charge and for the period required in accordance with the scale of Daily Charges as advertised at that Parking Place and as specified in Schedule 2 to this Order as amended from time to time, or
  - (ii) where applicable make arrangements to pay the appropriate fee through an Alternative Approved Method of Payment at the level of charge and for the period required in accordance with the scale of charges as advertised at that Parking Place and as specified in Schedule 2 to this Order as amended from time to time, or
  - (iii) the driver of a Vehicle using a Pay on Exit / Pay on Foot Parking Place shall, upon arriving at the Parking Place, take a ticket from the machine to establish time of entry and shall on return to the Vehicle prior to exit, pay the appropriate fee at the Pay on Foot machines or pay the attendant on duty, or a person nominated by the Council at the exit point, a parking fee at the level of charge and for the period required in accordance with the scale of charges as advertised on site and as specified in Schedule 2 to this Order as amended from time to time.

### Display of ticket

32. Save where there is a valid Parking Permit or Virtual Parking Permit in force for a Vehicle once a Vehicle has been Parked within a pay and display Parking Place the person in charge of the Vehicle shall:
- (i) ensure that a valid Pay and Display Ticket has been obtained and is clearly displayed at all times the Vehicle is Parked and to cover the entire period that the Vehicle is Parked in the Parking Place, and
  - (ii) clearly display the valid Pay and Display Ticket in the Relevant Position on the Vehicle in respect of which it was issued.

### Validity of Pay and Display Tickets



33. A Pay and Display Ticket is not transferable from one Vehicle to another and on transfer the Pay and Display Ticket ceases to be valid.
34. A Pay and Display Ticket is valid only in the Parking Place in which it was issued and in any other Parking Place.

#### Expiry of parking period

35. The expiry of the period for which the appropriate charge has been paid shall be:
- (i) where a Pay and Display Ticket has been purchased, when the time shown on the clock of the issuing Ticket Machine is later than the Expiry Time shown on the Pay and Display Ticket displayed, or
  - (ii) where an Alternative Approved Method of Payment has been used, the period for which payment has been made and recorded has been exceeded.

#### No Pay and Display Ticket displayed

36. If at any time while a Vehicle is Parked in a Parking Place, no Pay and Display Ticket is displayed on that Vehicle in the Relevant Position and in accordance with the provisions of this Order, it shall be deemed that the charge has not been paid save where there is a valid Virtual Parking Permit or Parking Permit in force for the Vehicle.
37. If at the time when a Vehicle is Parked during the Charging Hours in a Parking Place and the nearest Ticket Machine in that Parking Place is out of order, then a ticket shall be obtained from another Ticket Machine within the same Parking Place (where provided).
38. Where no valid Pay and Display Ticket can be obtained from a Ticket Machine within a Parking Place, Vehicles may be Parked in a Parking Place but may not be Parked for longer than the maximum period of parking in that Parking Place as advertised at the Parking Place.

#### Parking Permits and Virtual Parking Permits

39. Parking Permits are available from the Council at the appropriate fee, for a Vehicle of a specific class and for a specific Parking Place(s) subject to conditions determined by the Council.
40. Virtual Parking Permits may be made available from the Council at the appropriate fee, for a Vehicle of a specific class and for a specific Parking Place(s) subject to conditions determined by the Council.
41. The driver shall abide by the terms stipulated by the Council for the use of the Parking Permit or Virtual Parking Permit.
42. A Parking Permit or Virtual Parking Permit is only valid in the Parking Place(s) in respect of which it was issued, for the times and for the Vehicle in respect of which it was issued and up to the date of expiry shown on the Parking Permit or Virtual Parking Permit.
43. A Parking Permit remains the property of the Council and must be surrendered on request. In such instances any refund of fee paid will be provided in accordance with the Council's policies.

#### Display of Parking Permit

44. Save where there is a valid Virtual Parking Permit in force for a Vehicle a Parking Permit shall be displayed in the Relevant Position on the Vehicle in respect of which it was issued at all times during which the Vehicle is Parked in the Parking Place.

#### Replacement Parking Permits

45. Damaged or lost Parking Permits will be replaced on application to the Council and on payment of an administration fee in accordance with Council policies. The damaged or lost Parking Permit will then become immediately invalid. Any lost permits subsequently recovered are to be surrendered to the Council as soon as practically possible.

#### Surrender of Parking Permit

46. A Parking Permit remains the property of the Council and must be surrendered on request. In such instances any refund of fee paid will be provided in accordance with the Council policy in place at that time.
47. The holder of a Parking Permit may, on surrendering the Parking Permit, be entitled to a refund based upon the Council policy in place at that time.

#### Restriction on removal

48. When a Pay and Display Ticket or Parking Permit has been exhibited on a Vehicle in the Relevant Position no person shall remove the Pay and Display Ticket or Parking Permit from the Vehicle until the Vehicle is removed from the Parking Place.

### **PART 4 EXEMPTIONS**

#### Exemption from Daily Charge

49. No Daily Charge shall be payable in respect of:
- (i) a Vehicle which displays in the Relevant Position a valid Disabled Person's Badge, provided that the Vehicle immediately before or after the act of parking has been used or is about to be used by the person(s) in respect of whom the Disabled Person's Badge is issued, up to the maximum period of allowed paid-for parking on each specific Parking Place as detailed on relevant signage on the Parking Place and in Schedule 2 of this Order;
  - (ii) Vehicles parked in a short stay car park, as listed in Schedule 2, using a disabled Person's badge must also display a time clock showing the time of arrival.
  - (iii) a Vehicle Parked displaying in a Relevant Position a valid Parking Permit valid for that Parking Place; or
  - (iv) A Vehicle with a valid Virtual Parking Permit in force in relation to it.

#### Absence of Ticket Machine

50. If at the time when a Vehicle is Parked in a Parking Place during the charging hours there is no Ticket Machine at the Parking Place, or all the Ticket Machines

at that Parking Place carry notices placed upon them by a person duly authorised by the Council indicating that they are out of order, the driver of that Vehicle shall be exempt from purchasing a Pay and Display Ticket.

#### Payment by Alternative Approved Method of Payment

51. Where arrangements to pay the Daily Charge have been made through an Alternative Approved Method of Payment and no Pay and Display Ticket is produced by following the process, the driver of a Vehicle shall be exempt from the requirement to display such a ticket.

### **PART 5**

#### **RELOCATION, REMOVAL AND DISPOSAL OF VEHICLES**

#### Emergencies

52. A person authorised by the Council or a Police Constable in uniform may, using such measures as are appropriate, move or cause to be moved in the case of an emergency to any place he/she thinks fit, any Vehicle Parked in a Parking Place.

#### Contraventions in suspended Parking Place

53. A person authorised by the Council may, using such measures as are appropriate, move or cause to be moved to any place he/she thinks fit, any Vehicle Parked in a Parking Place which has been closed or suspended in whole or in part by the Council and the cost of movement or removal and safe keeping shall be the liability of the Owner of the Vehicle.

#### Safe keeping

54. Any person removing a Vehicle from a Parking Place under the provisions of this Order shall make such arrangements as may be reasonably necessary to provide for the safe keeping of the Vehicle.

#### Disposal of Vehicles abandoned in Parking Places

55. The Council may sell or otherwise dispose of, in accordance with current legislation, a Vehicle which has been, or could at any time be, removed from a Parking Place if the Vehicle appears to have been abandoned.

**PART 6**  
**CONTRAVENTION AND PENALTY CHARGE**

Contravention

56. If a Vehicle is Parked in a Parking Place without complying with the requirements of this Order, a contravention shall have occurred, and a Penalty Charge shall be payable.

Restriction on removal of notices

57. Any Penalty Charge Notice fixed to a Vehicle in accordance with this Order shall not be removed or interfered with except by or under the authority of:
- (i) the Owner, or person in charge of, the Vehicle;
  - (ii) the Council for the Parking Place in which the Vehicle in question was found.

Manner of Payment of Penalty Charge Notice

58. The Penalty Charge shall be paid in accordance with the instructions contained on the Penalty Charge Notice. Representations against the Penalty Charge Notice can be made as detailed on the Penalty Charge Notice and in accordance with any relevant applicable Regulations and/or legislation.
59. If the registered keeper fails to pay the Penalty Charge in accordance with the instructions contained on the Penalty Charge Notice the Council may pursue payment and any increase in charges incurred by non-payment in accordance with any relevant applicable Regulations and/or legislation governing the recovery of payment(s) due.

Indications as Evidence

60. The particulars given in the Penalty Charge served on a Vehicle in accordance with the provisions of this Order shall be treated as evidence in any proceedings relating to failure to pay the Penalty Charge.

**PART 7**  
**LIABILITY AND OTHER PROVISIONS**

### Liability

61. The Council accepts no liability for the loss or damage to Vehicles or other property left in any of the Parking Places to which this Order applies save for that arising from the negligence of the Council.

### Validity

62. If a court, the Department for Transport, the Traffic Penalty Tribunal or the Traffic Enforcement Centre declares any part of this Order to be invalid or unenforceable, such declaration shall not invalidate the remainder of the Order.

### Driving within a Parking Place

63. Where in a Parking Place signs are erected, or surface markings are laid for the purpose of:

- (i) indicating the entrance to or exit from the Parking Place, or
- (ii) indicating that a Vehicle using the Parking Place shall proceed in a specified direction within the Parking Place,

any person who drives or permits to be driven any Vehicle:

- (i) so that it enters the Parking Place otherwise than by an entrance or leaves the Parking Place otherwise than by an exit, so indicated, or
- (ii) in a direction other than so specified

shall be liable to prosecution.

64. Any person who, without with the permission of a person authorised by the Council in that behalf, drives or permits to be driven any Vehicle in a Parking Place for any purpose other than the purpose of leaving that Vehicle in the Parking Place in accordance with the provisions of this Order or for the purpose of departing from the Parking Place shall be liable to prosecution.

### Wilful damage

65. Any person who with intent to defraud interferes with a Ticket Machine or operates or attempts to operate it by the insertion of objects other than undamaged and unaltered coins of legal tender and of the appropriate denomination, or other Alternative Approved Method of Payment, shall be liable to prosecution.

### Domestic purposes

66. Any person who uses any part of the Parking Place or any Vehicle Parked in a Parking Place:
- (i) for sleeping or camping or cooking, or
  - (ii) for the purpose of servicing or washing any Vehicle or part thereof other than is reasonably necessary to enable the Vehicle to depart from the Parking Place,
- shall be liable to prosecution.

### Behaviour

67. Any person who wilfully sounds any horn or any other similar instrument on a Vehicle except when about to change the position of the Vehicle in or to depart from the Parking Place shall be liable to prosecution.
68. Any person who in a Parking Place shouts or otherwise makes any loud noise to the disturbance or annoyance of users of the Parking Place or residents or premises in the neighbourhood shall be liable to prosecution.
69. Any person who in a Parking Place uses any threatening, abusive or insulting language, gesture or conduct with intent to put any person in fear or so as to occasion a breach of the peace or whereby a breach of the peace is likely to be occasioned shall be liable to prosecution.

### Other activities

70. Any person who in a Parking Place:
- (i) erects or causes or permits to be erected any tent, booth, stand, building or other structure without the written consent of the Council, or
  - (ii) lights or causes to be lit any fire,
- shall be liable to prosecution.

## **PART 8**

## **REVOCATIONS**

## Revocations

71. The following Order (and modifications (if any)) made by High Peak Borough Council before the introduction of this Order is hereby revoked as from the date this Order comes into operation:

- 71.1 The High Peak Borough Council (Off-Street Parking Places)  
Order 1998
- 71.2 The High Peak Borough Council (Off-Street Parking Places)  
(Modification No.1) Order 1999
- 71.3 The High Peak Borough Council (Off-Street Parking Places)  
(Modification No.2) Order 2000
- 71.4 The High Peak Borough Council (Off-Street Parking Places)  
(Modification No.3) Order 2001
- 71.5 The High Peak Borough Council (Off-Street Parking Places)  
(Modification No.4) Order 2002
- 71.6 The High Peak Borough Council (Off-Street Parking Places)  
(Modification No.5) Order 2003
- 71.7 The High Peak Borough Council (Off-Street Parking Places)  
(Modification No.6) Order 2004
- 71.8 The High Peak Borough Council (Off-Street Parking Places)  
(Modification No.7) Order 2005
- 71.9 The High Peak Borough Council (Off-Street Parking Places)  
(Modification No.8) Order 2006
- 71.10 The High Peak Borough Council (Off-Street Parking Places)  
(Modification No.9) Order 2007
- 71.11 The High Peak Borough Council (Off-Street Parking Places) Civil  
Enforcement and Consolidation Order 2008 and all (if any)  
modifications thereto



The **COMMON SEAL** of  
**HIGH PEAK BOROUGH COUNCIL**  
was affixed hereto in the presence of

**Solicitor**

Dated this                      day of                      2018

**HIGH PEAK BOROUGH COUNCIL**

**(OFF-STREET PARKING PLACES)**

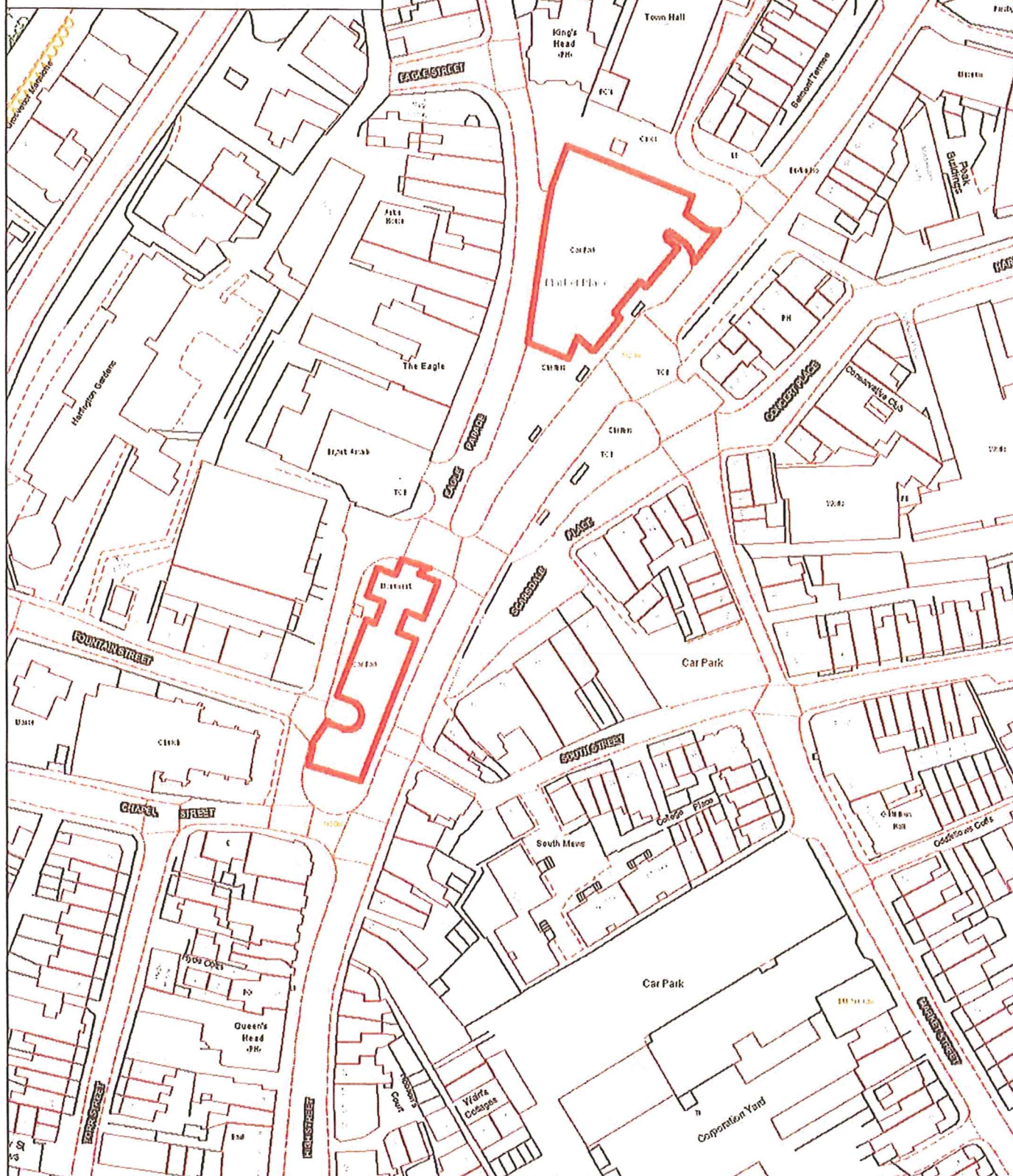
**ORDER 2018**

**SCHEDULE 1 – PARKING PLACES AND PLANS**

<b>Name of Parking Place</b>	<b>Plan No.</b>
<b>Market Place, Buxton</b>	<b>1</b>
<b>Market Street, Buxton</b>	<b>2</b>
<b>The Slopes, Buxton</b>	<b>3</b>
<b>Bridge Street, Buxton</b>	<b>4</b>
<b>Spring Gardens / Wye Street, Buxton</b>	<b>5</b>
<b>Pavilion Gardens, Buxton</b>	<b>6</b>
<b>South Street, Buxton</b>	<b>7</b>
<b>Sylvan, Buxton</b>	<b>8</b>
<b>Municipal Buildings, Glossop</b>	<b>9</b>
<b>Bernard Street, Glossop</b>	<b>10</b>
<b>Edward Street, Glossop</b>	<b>11</b>
<b>Market Street, New Mills</b>	<b>12</b>
<b>Town Hall, New Mills</b>	<b>13</b>
<b>Torr Top, New Mills</b>	<b>14</b>
<b>Hope, Hope Valley</b>	<b>15</b>
<b>Castleton, Hope Valley</b>	<b>16</b>

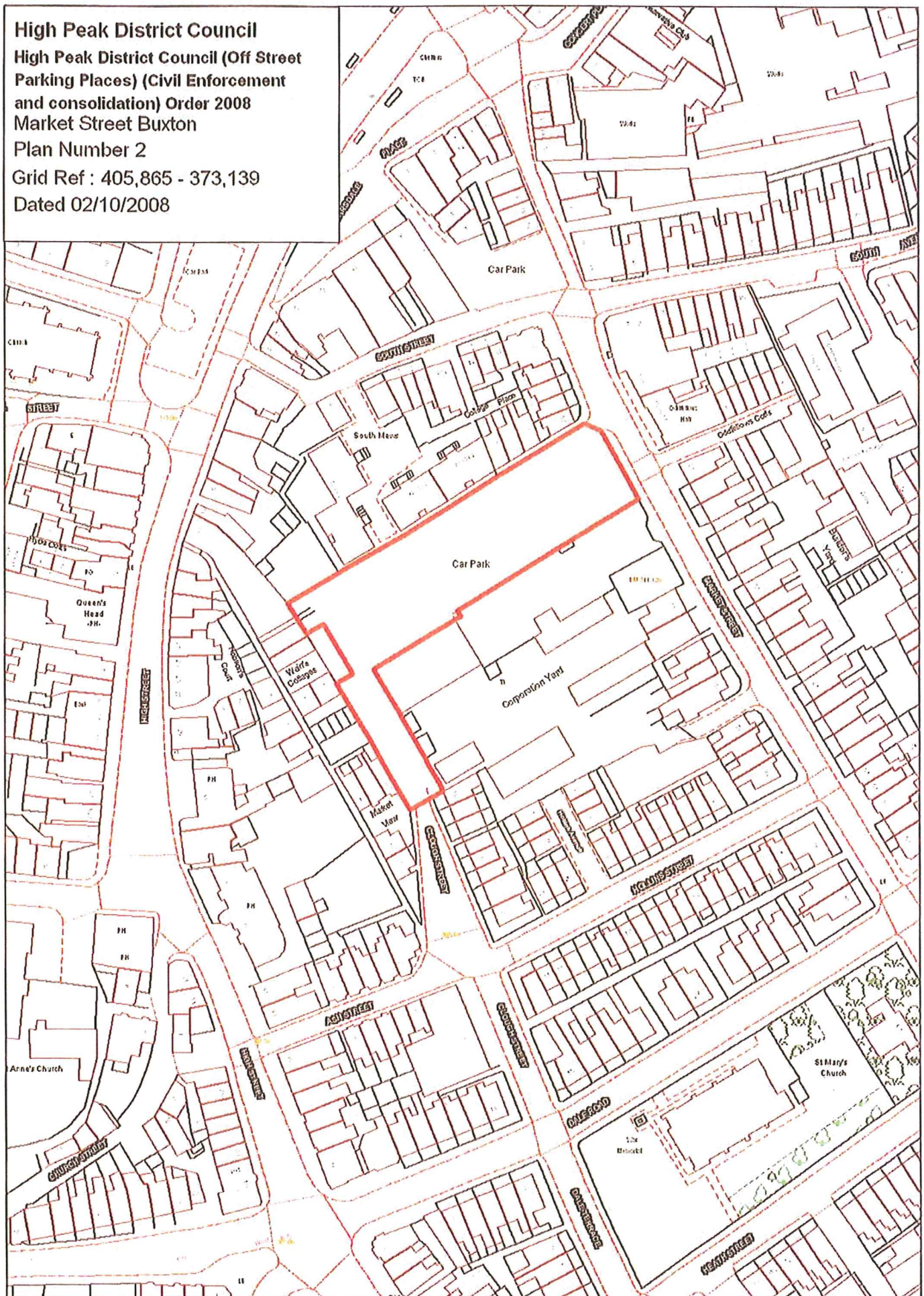
<b>Edale, Hope Valley</b>	<b>17</b>
<b>Thornbrook Road, Chapel-en-le-Frith</b>	<b>18</b>
<b>Miry Meadow, Chapel-en-le-Frith</b>	<b>19</b>
<b>Canal Street, Whaley Bridge</b>	<b>20</b>
<b>Station Car Park, Whaley Bridge</b>	<b>21</b>
<b>Albert Road, Hadfield</b>	<b>22</b>
<b>Station Road, Hadfield</b>	<b>23</b>

**High Peak Borough Council**  
**High Peak Borough Council (Off-Street**  
**Parking Places) (Civil Enforcement**  
**and Consolidation) Order 2008**  
 Market Place, Buxton.  
 Plan Number 1  
 Grid Ref : 405,842 - 373,283  
 Date 02/10/2008





High Peak District Council  
 High Peak District Council (Off Street  
 Parking Places) (Civil Enforcement  
 and consolidation) Order 2008  
 Market Street Buxton  
 Plan Number 2  
 Grid Ref : 405,865 - 373,139  
 Dated 02/10/2008

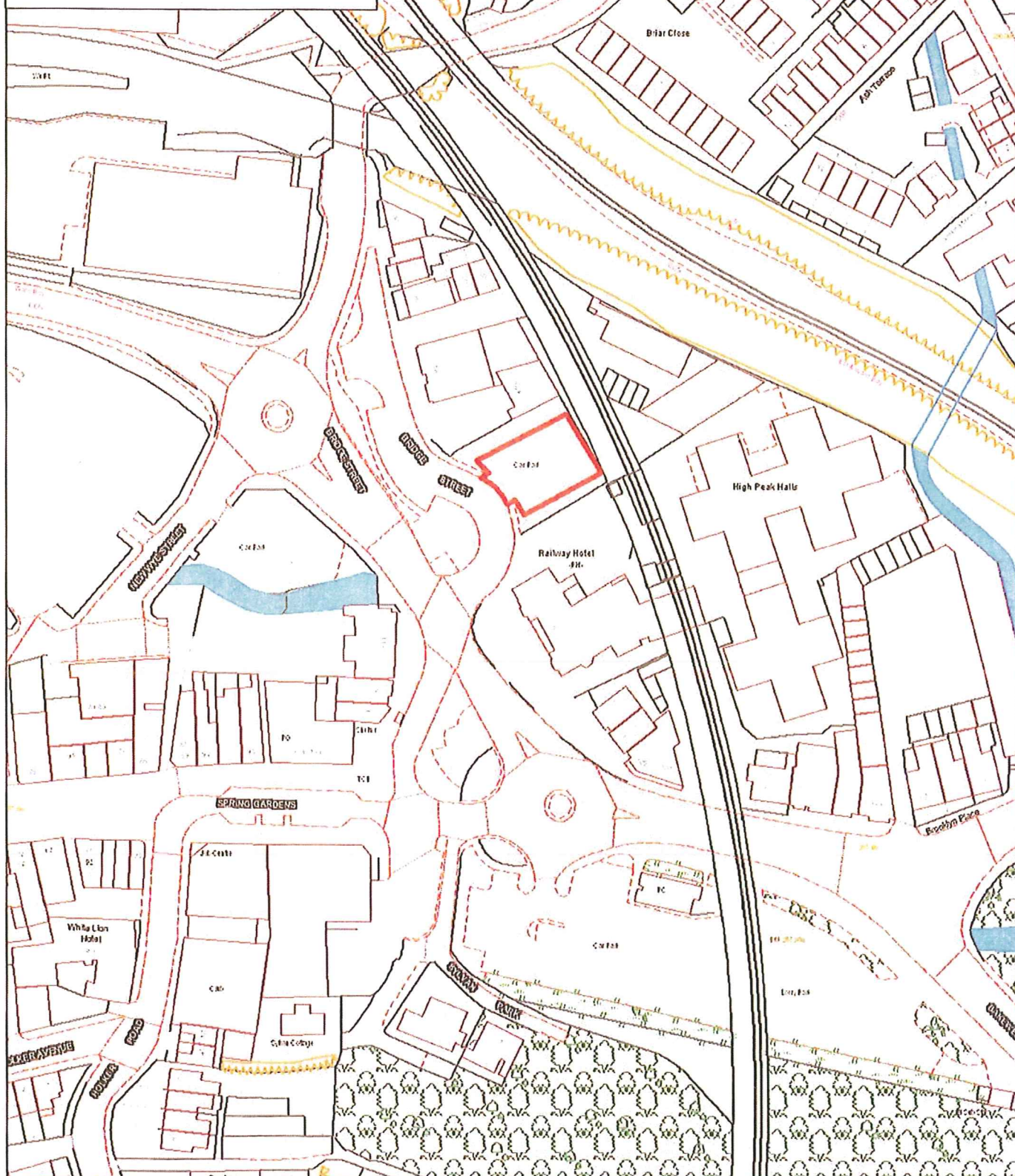




**High Peak District Council**  
**High Peak District Council (Off Street**  
**Parking Places) (Civil Enforcement**  
**and consolidation) Order 2008**  
**Slopes, Buxton**  
**Plan Number 3**  
**Grid Ref : 405,887 - 373,351**  
**Dated 02/10/2008**

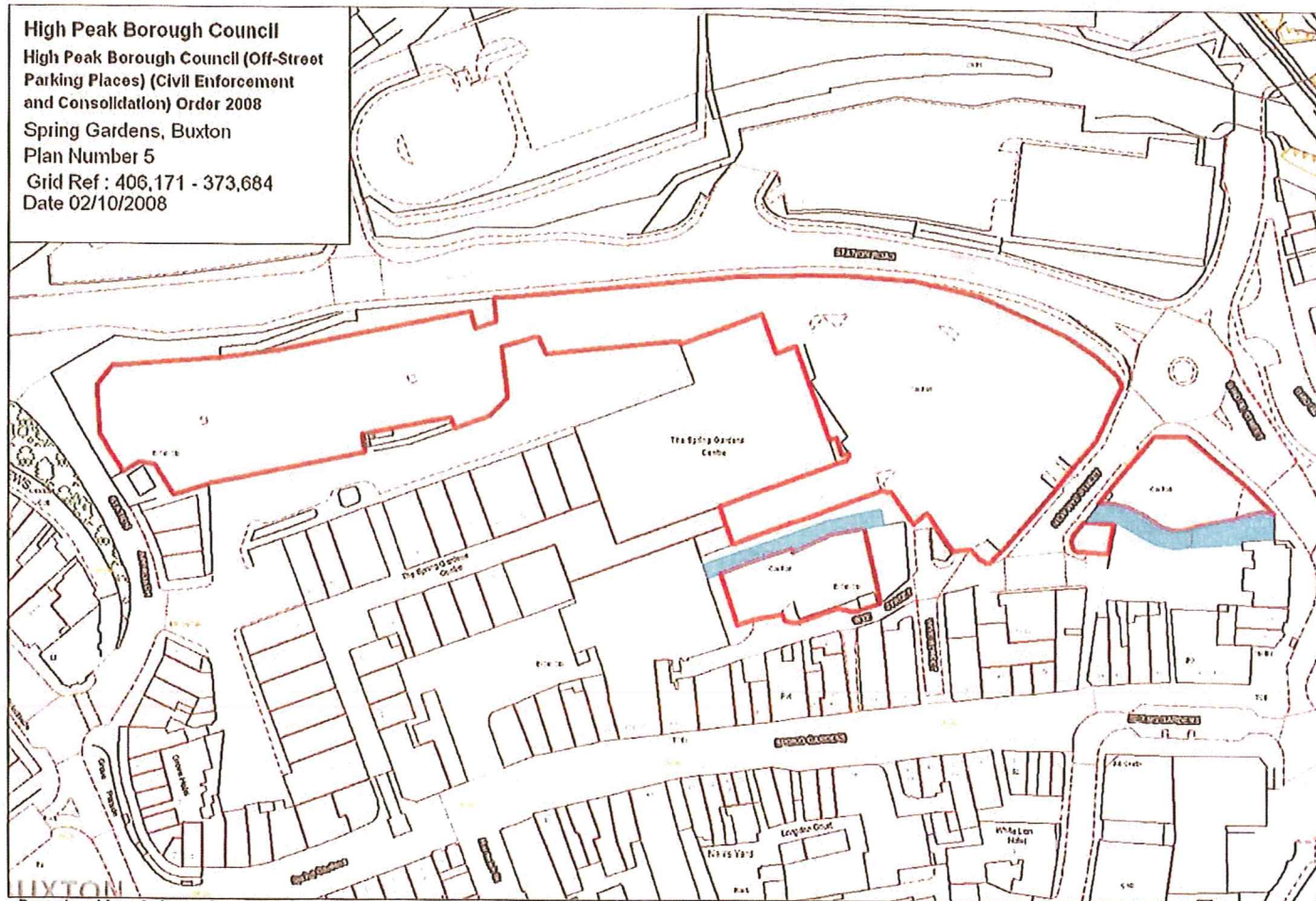


**High Peak District Council**  
**High Peak District Council (Off Street**  
**Parking Places) (Civil Enforcement**  
**and consolidation) Order 2008**  
**Bridge Street, Buxton**  
**Plan Number 4**  
**Grid Ref : 406,241 - 373,665**  
**Dated 02/10/2008**





High Peak Borough Council  
High Peak Borough Council (Off-Street  
Parking Places) (Civil Enforcement  
and Consolidation) Order 2008  
Spring Gardens, Buxton  
Plan Number 5  
Grid Ref : 406,171 - 373,684  
Date 02/10/2008



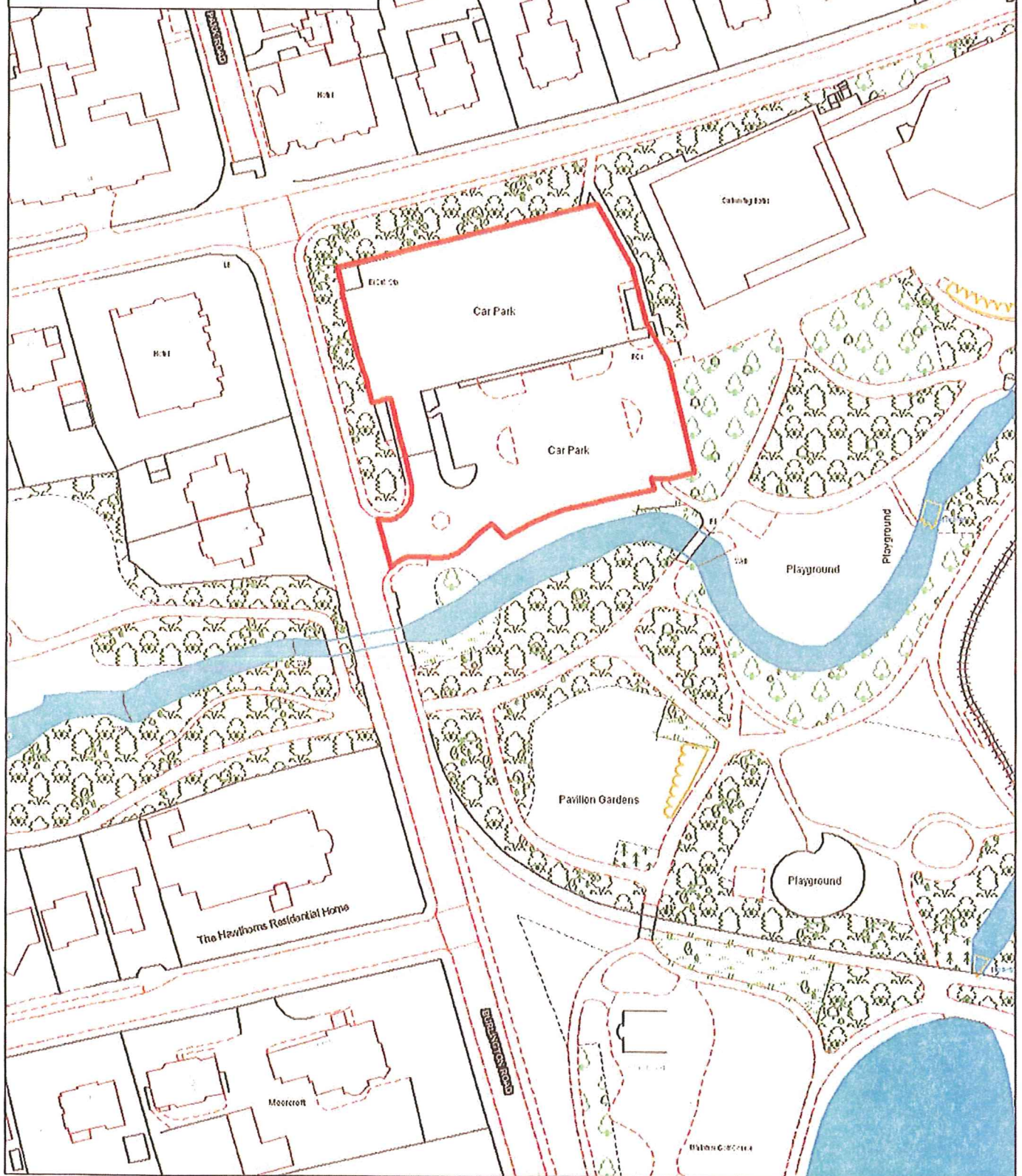
Reproduced from Ordnance Survey digital map data  
© Crown copyright 2000. All rights reserved. High Peak Borough Council License No. 10018411

Scale 1:1250

NORTH

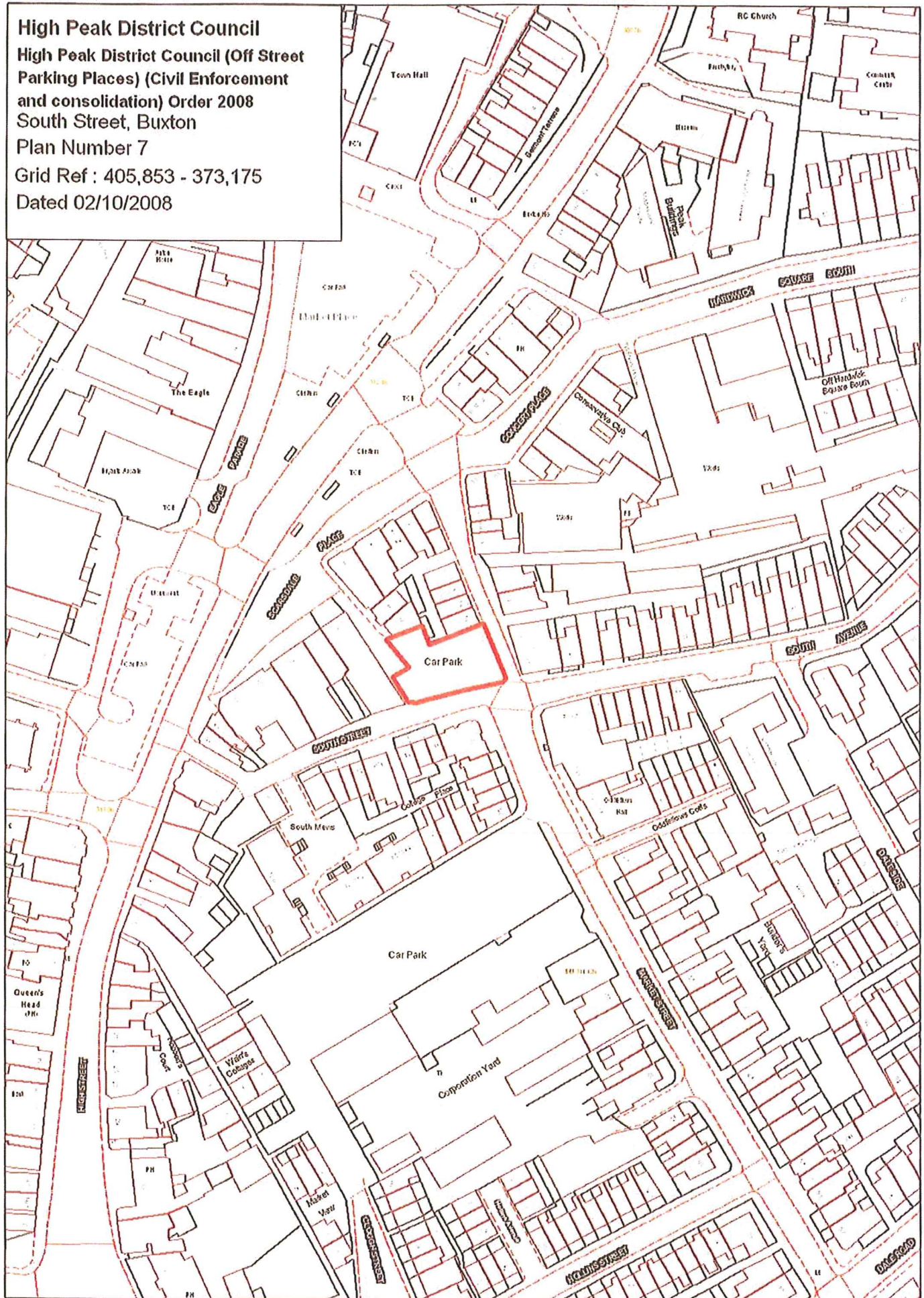


**High Peak District Council**  
**High Peak District Council (Off Street**  
**Parking Places) (Civil Enforcement**  
**and consolidation) Order 2008**  
**Pavillion Gardens, Buxton**  
**Plan Number 6**  
**Grid Ref : 405,378 - 373,342**  
**Dated 02/10/2008**





**High Peak District Council**  
**High Peak District Council (Off Street**  
**Parking Places) (Civil Enforcement**  
**and consolidation) Order 2008**  
**South Street, Buxton**  
**Plan Number 7**  
**Grid Ref : 405,853 - 373,175**  
**Dated 02/10/2008**





# High Peak District Council

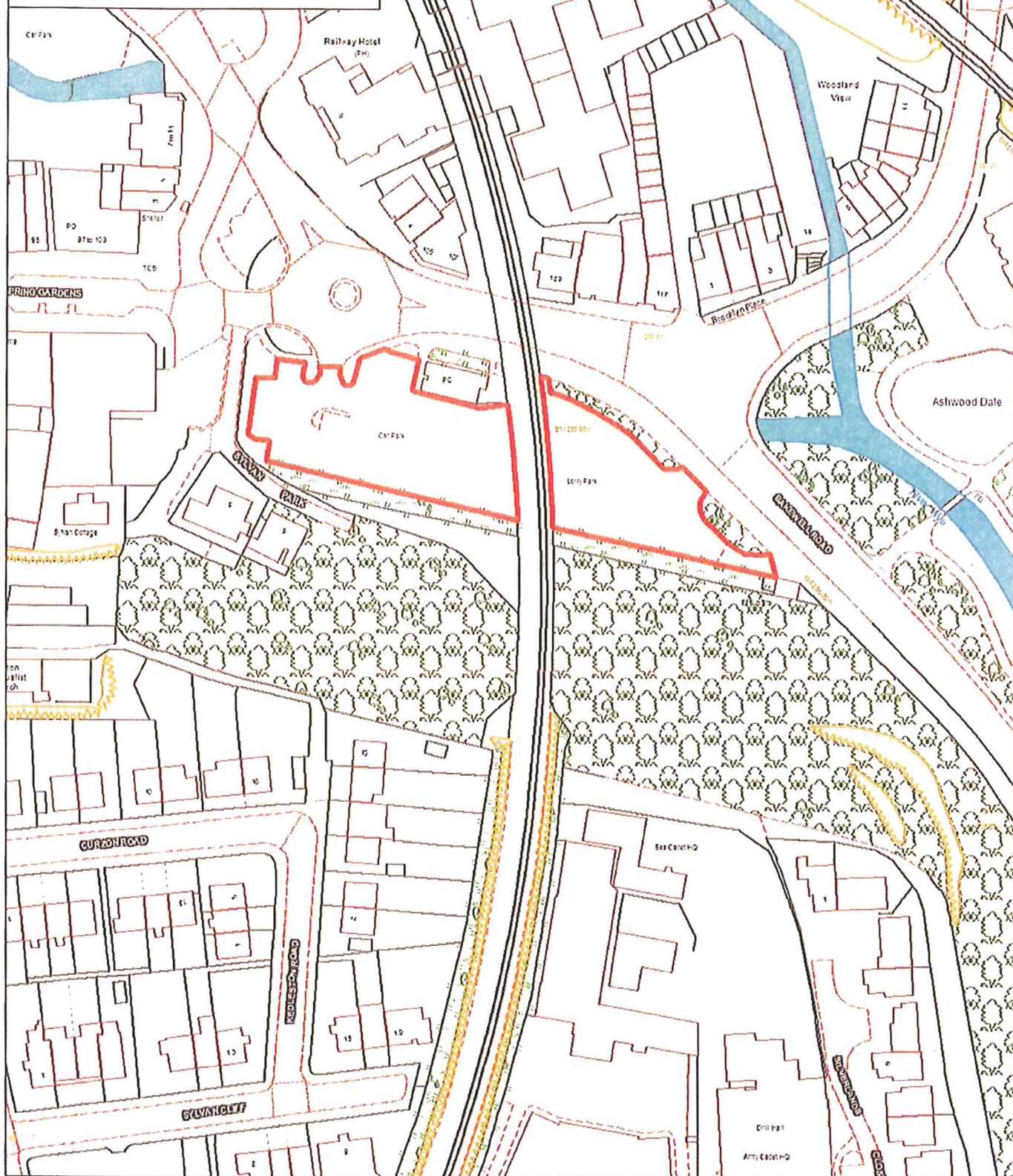
High Peak District Council (Off Street  
Parking Places) (Civil Enforcement  
and consolidation) Order 2008

Sylvan Car Park, Buxton

Plan Number 8

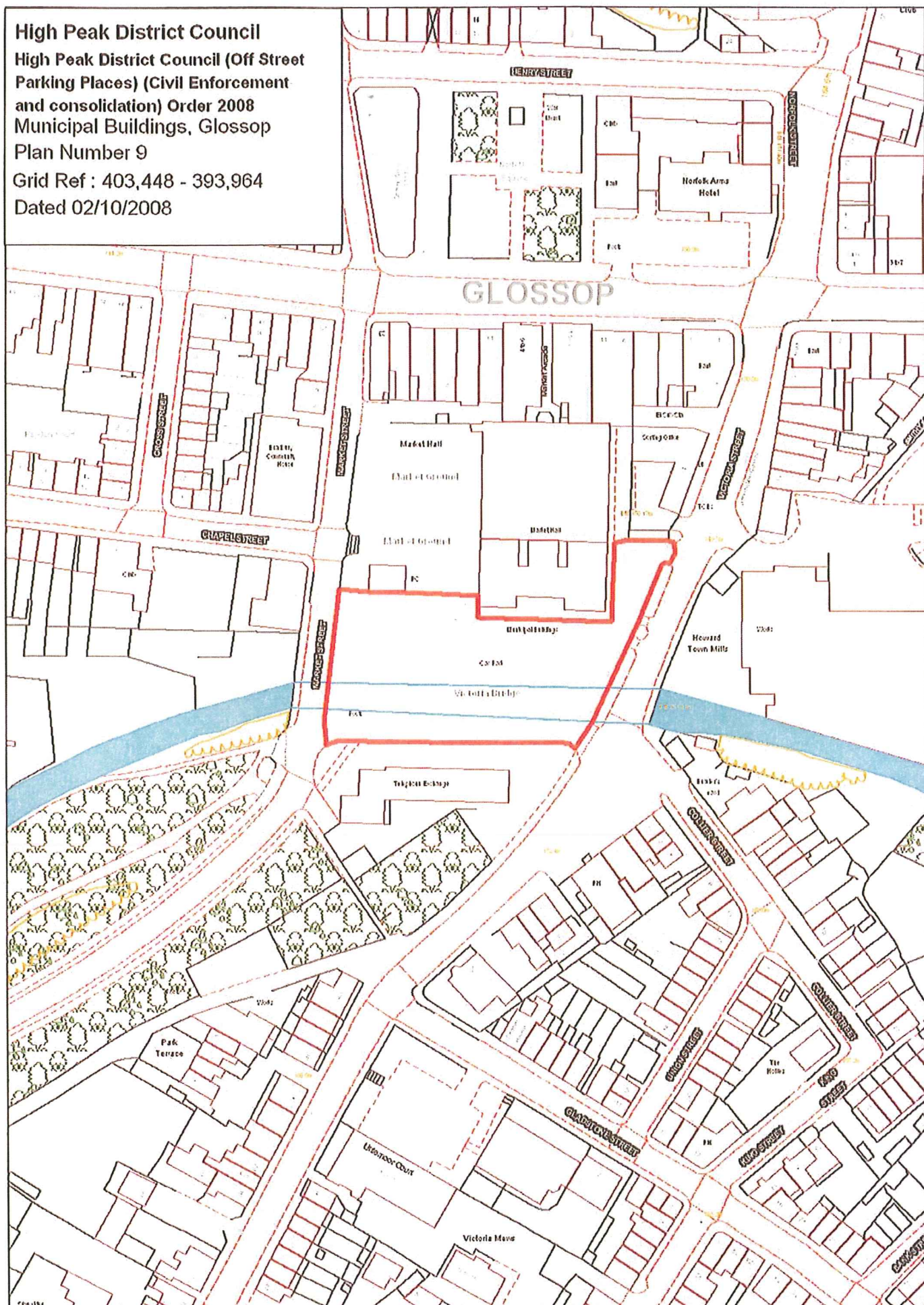
Grid Ref : 406,247 - 373,582

Dated 02/10/2008



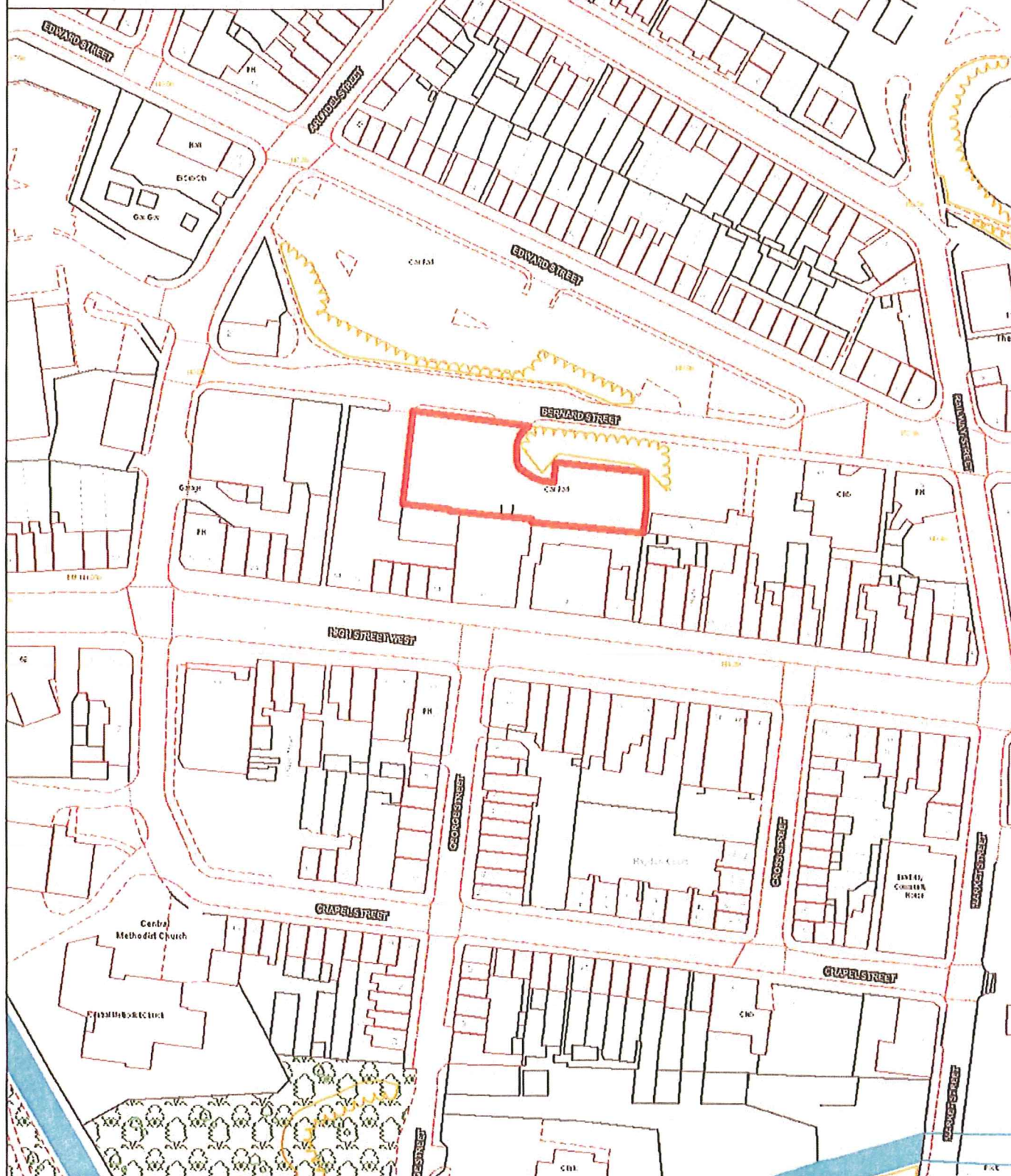


**High Peak District Council**  
**High Peak District Council (Off Street**  
**Parking Places) (Civil Enforcement**  
**and consolidation) Order 2008**  
**Municipal Buildings, Glossop**  
**Plan Number 9**  
**Grid Ref : 403,448 - 393,964**  
**Dated 02/10/2008**



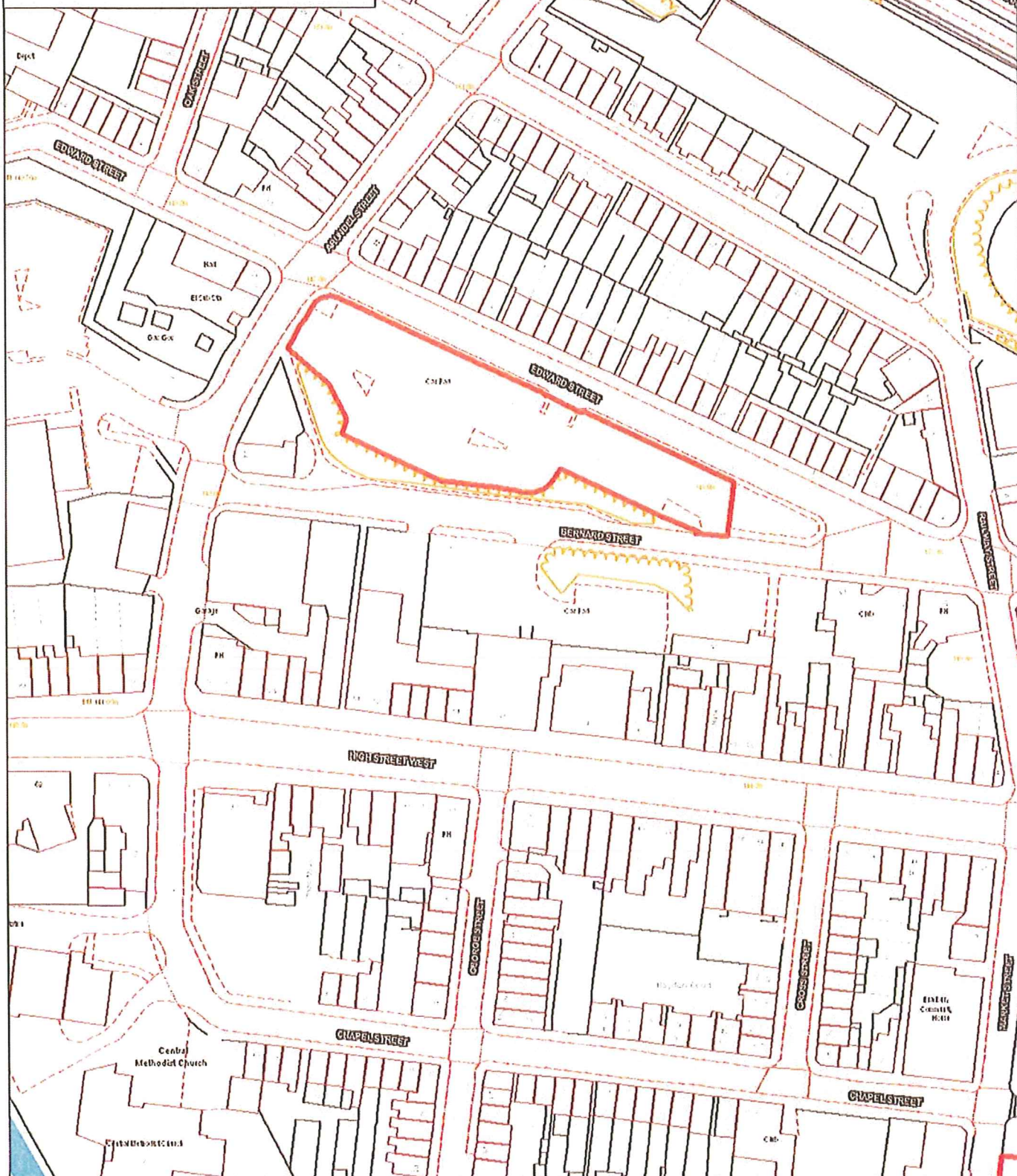


High Peak Borough Council  
 High Peak Borough Council (Off-Street  
 Parking Places) (Civil Enforcement  
 and Consolidation) Order 2008  
 Bernard Street, Glossop  
 Plan Number 10  
 Grid Ref : 403,259- 394,128  
 Date 02/10/2008



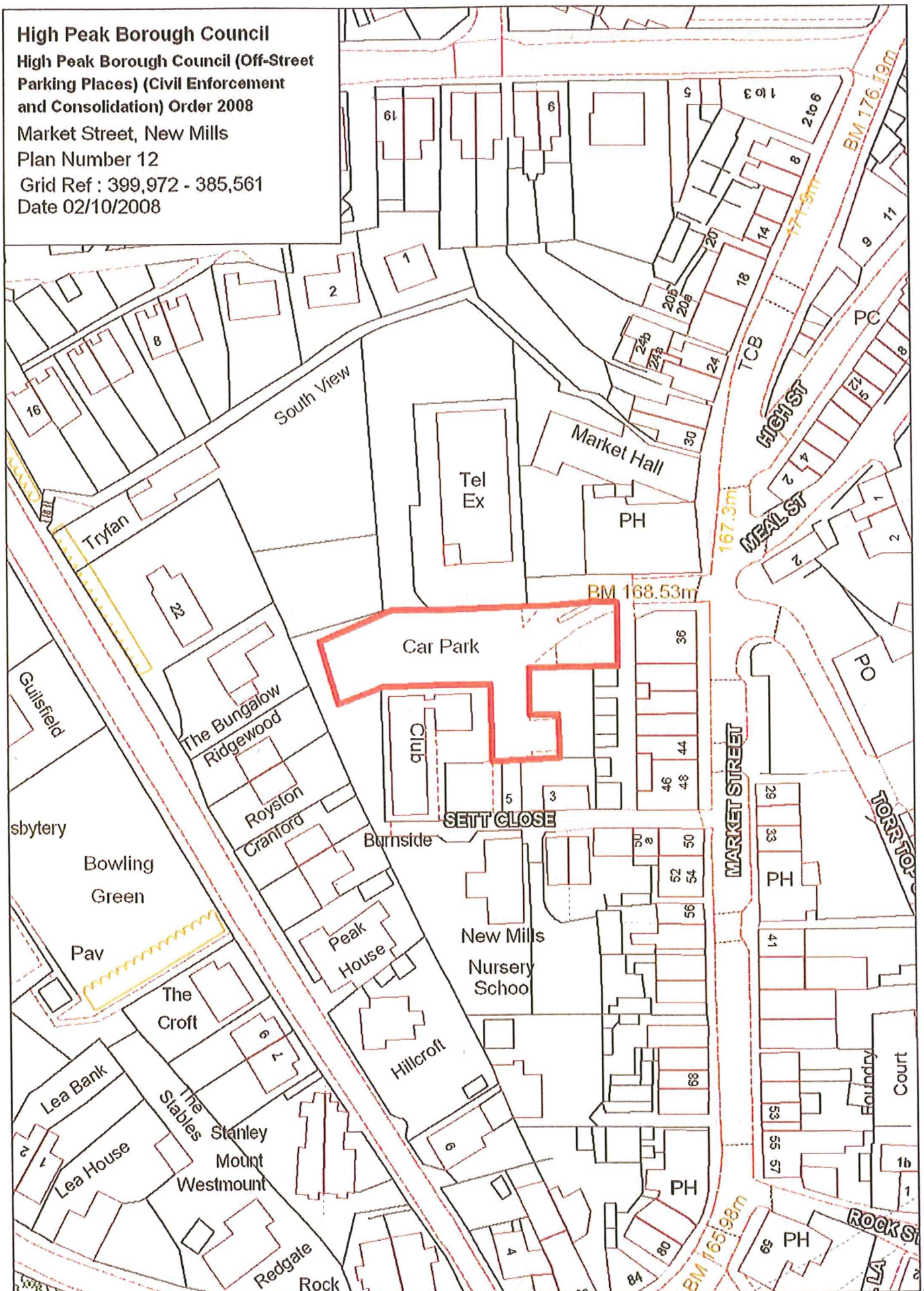


High Peak District Council  
High Peak District Council (Off Street  
Parking Places) (Civil Enforcement  
and consolidation) Order 2008  
Edward Street, Glossop  
Plan Number 11  
Grid Ref : 403,268 - 394,163  
Dated 02/10/2008



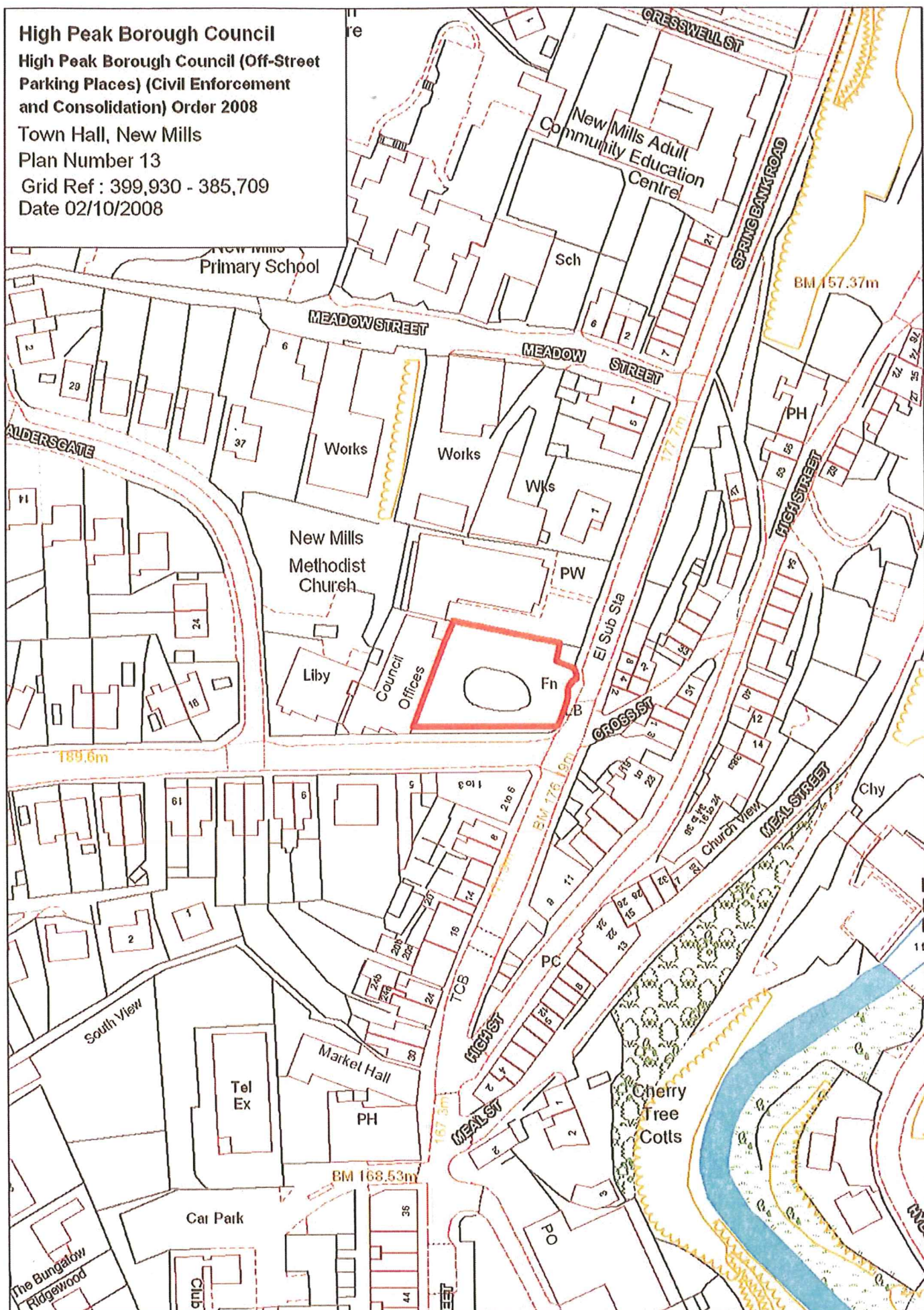


High Peak Borough Council  
 High Peak Borough Council (Off-Street  
 Parking Places) (Civil Enforcement  
 and Consolidation) Order 2008  
 Market Street, New Mills  
 Plan Number 12  
 Grid Ref : 399,972 - 385,561  
 Date 02/10/2008



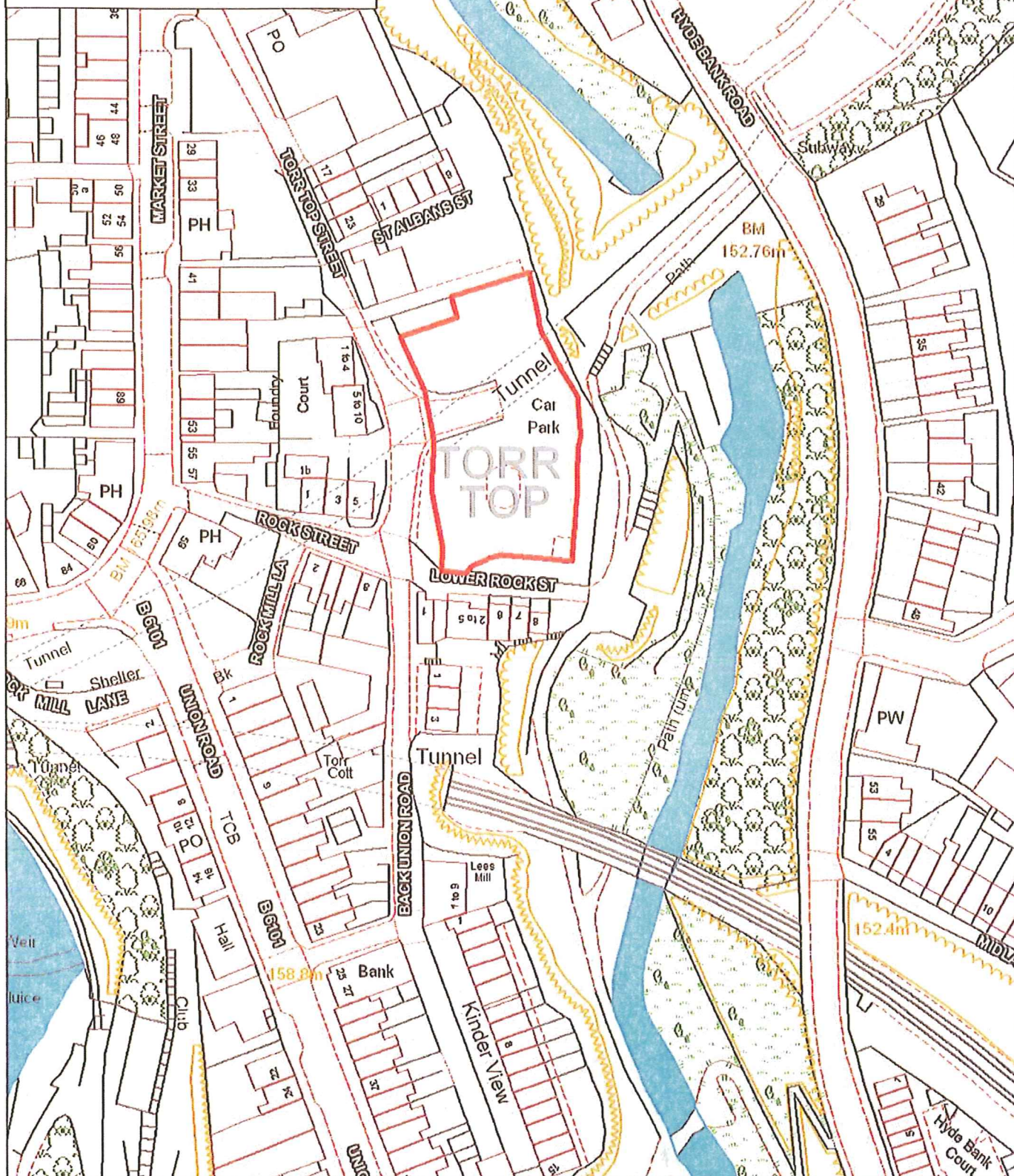


High Peak Borough Council  
 High Peak Borough Council (Off-Street  
 Parking Places) (Civil Enforcement  
 and Consolidation) Order 2008  
 Town Hall, New Mills  
 Plan Number 13  
 Grid Ref : 399,930 - 385,709  
 Date 02/10/2008





**High Peak District Council**  
**High Peak District Council (Off Street**  
**Parking Places) (Civil Enforcement**  
**and consolidation) Order 2008**  
**Torr Top, New Mills**  
**Plan Number 14**  
**Grid Ref : 400,043 - 385,453**  
**Dated 02/10/2008**



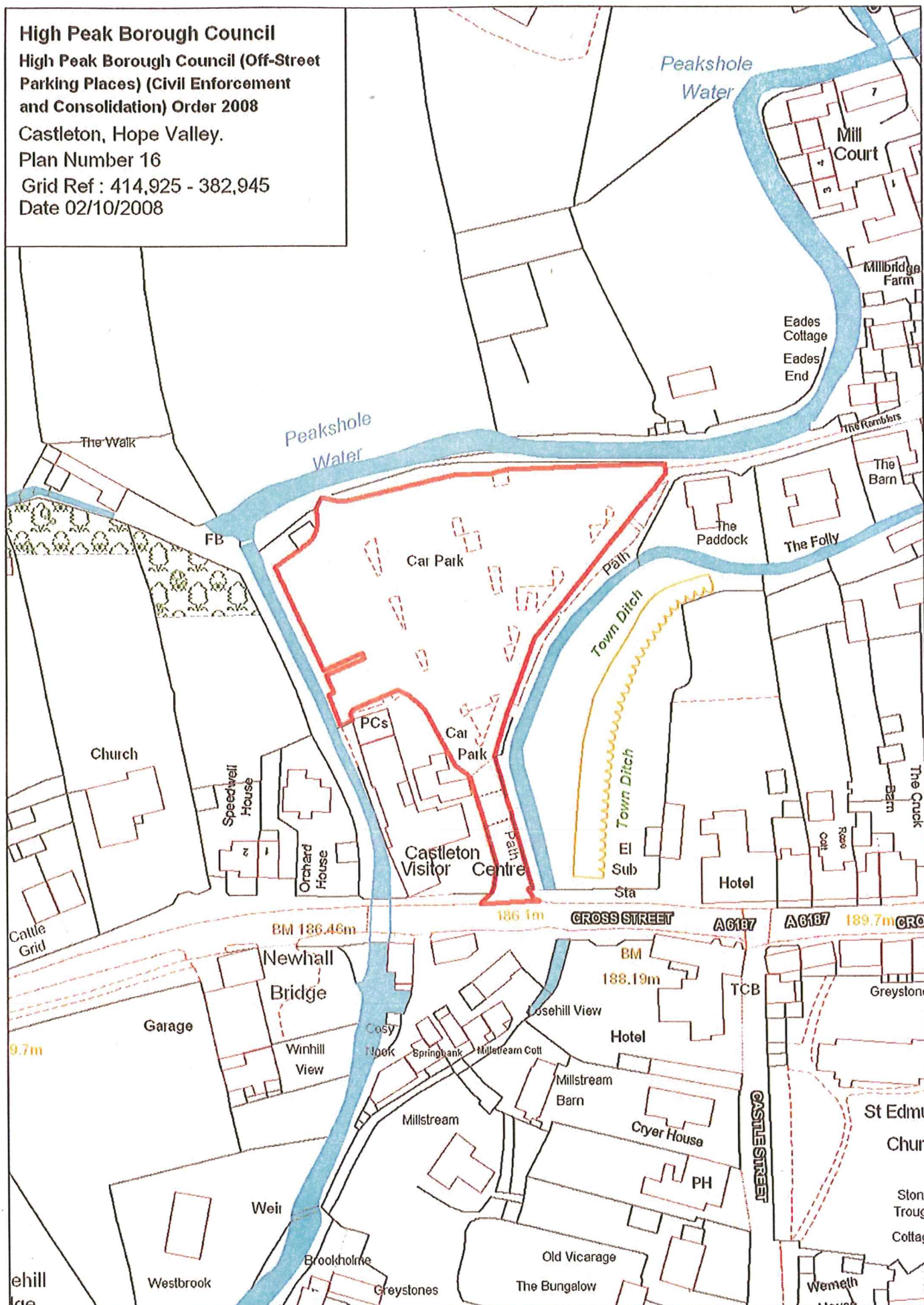


Date 02/10/2008





**High Peak Borough Council**  
**High Peak Borough Council (Off-Street**  
**Parking Places) (Civil Enforcement**  
**and Consolidation) Order 2008**  
 Castleton, Hope Valley.  
 Plan Number 16  
 Grid Ref : 414,925 - 382,945  
 Date 02/10/2008





High Peak Borough Council  
High Peak Borough Council (Off-Street  
Parking Places) (Civil Enforcement  
and Consolidation) Order 2008

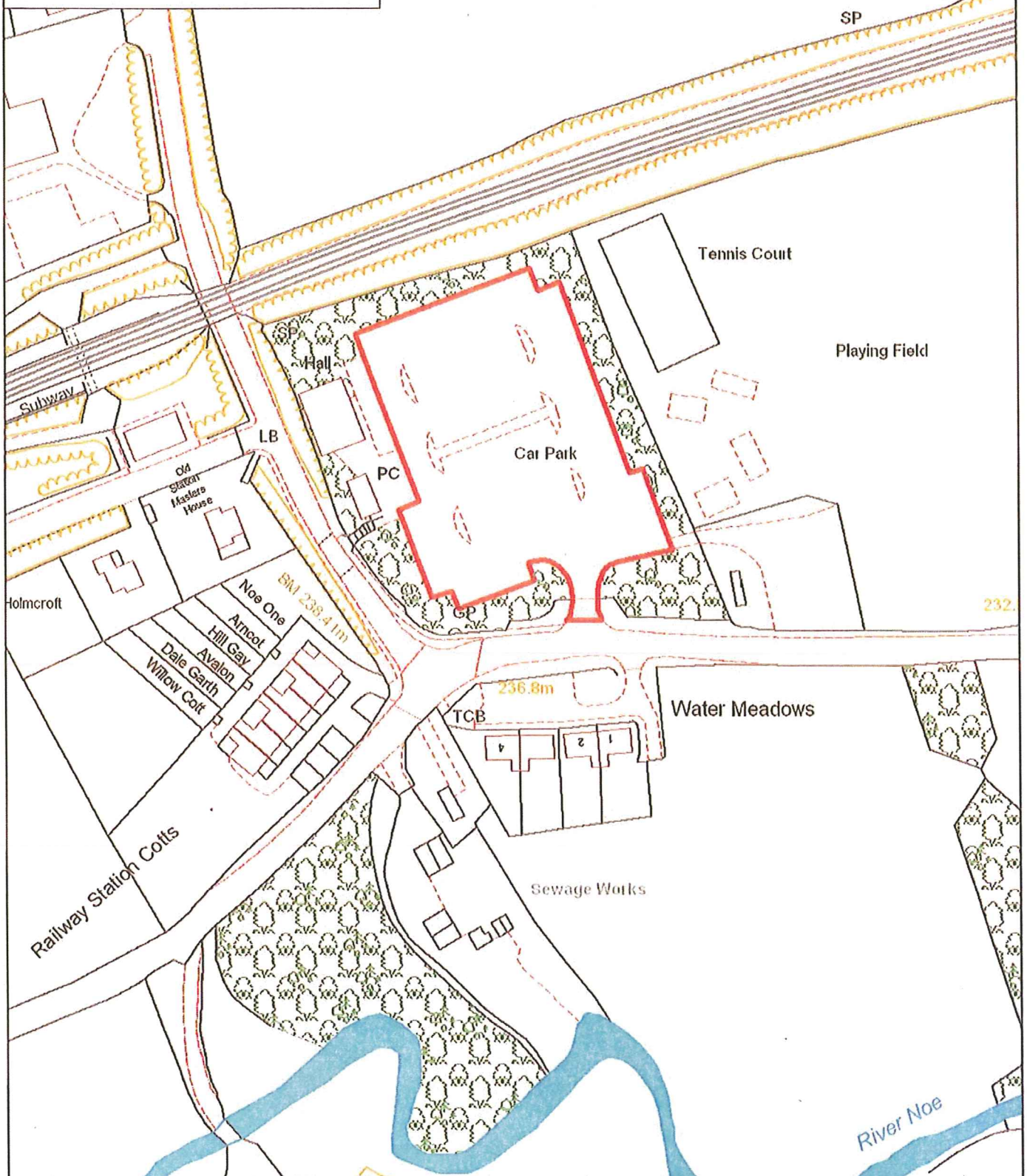
Edale, Hope Valley.

Plan Number 17

Grid Ref : 412,420 - 385,298

Date 02/10/2008

# Vale of Edale



**High Peak Borough Council**

**High Peak Borough Council (Off-Street  
Parking Places) (Civil Enforcement  
and Consolidation) Order 2008**

Thornbrook Road, Chapel-en-le-Frith.

Plan Number 18

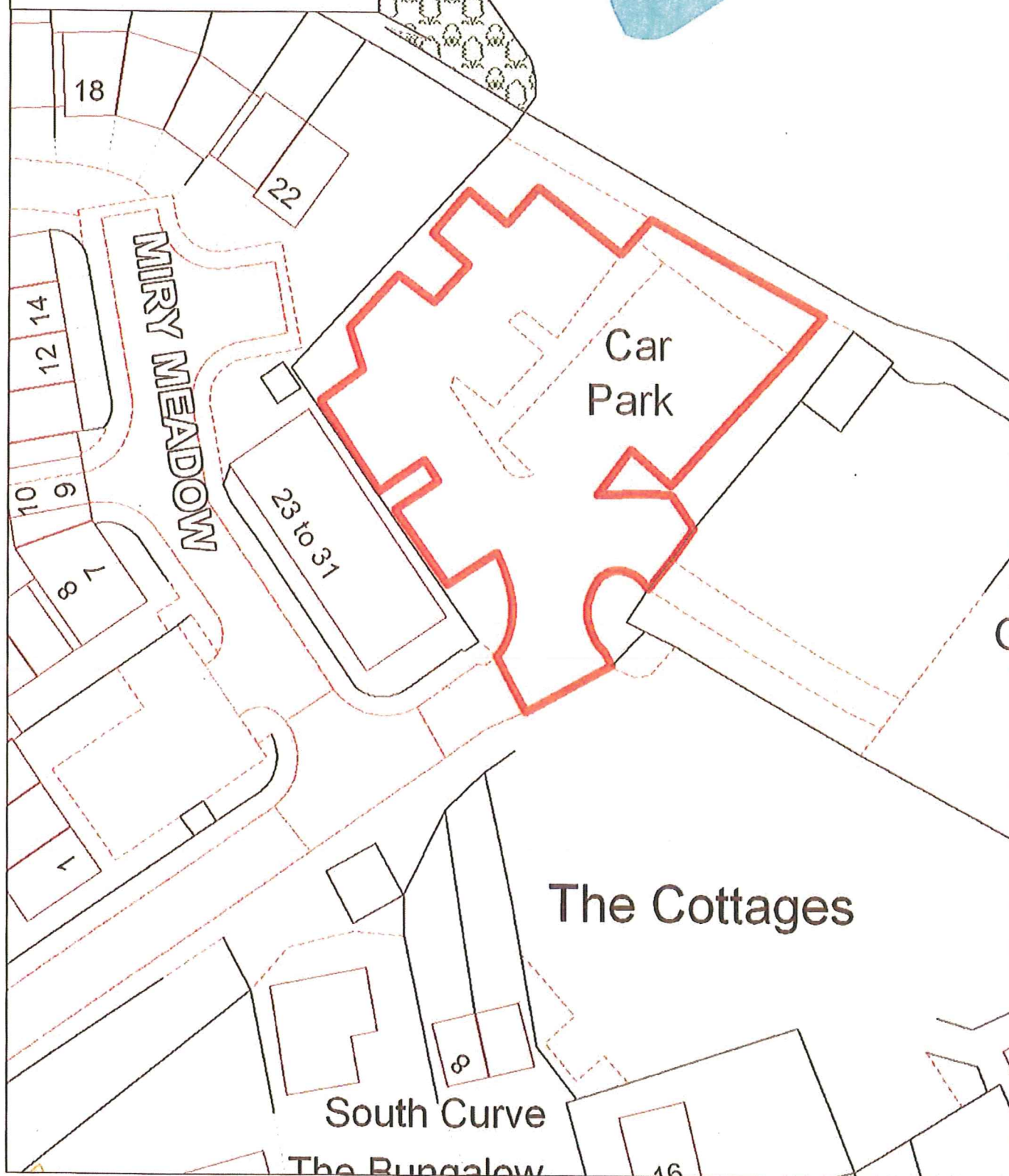
Grid Ref : 406,008 - 380,727

Date 02/10/2008





High Peak District Council  
High Peak District Council (Off Street  
Parking Places) (Civil Enforcement  
and consolidation) Order 2008  
Miry Meadow, Chapel-en-le-Frith  
Plan Number 19  
Grid Ref : 405,587 - 380,757  
Dated 02/10/2008





# High Peak Borough Council

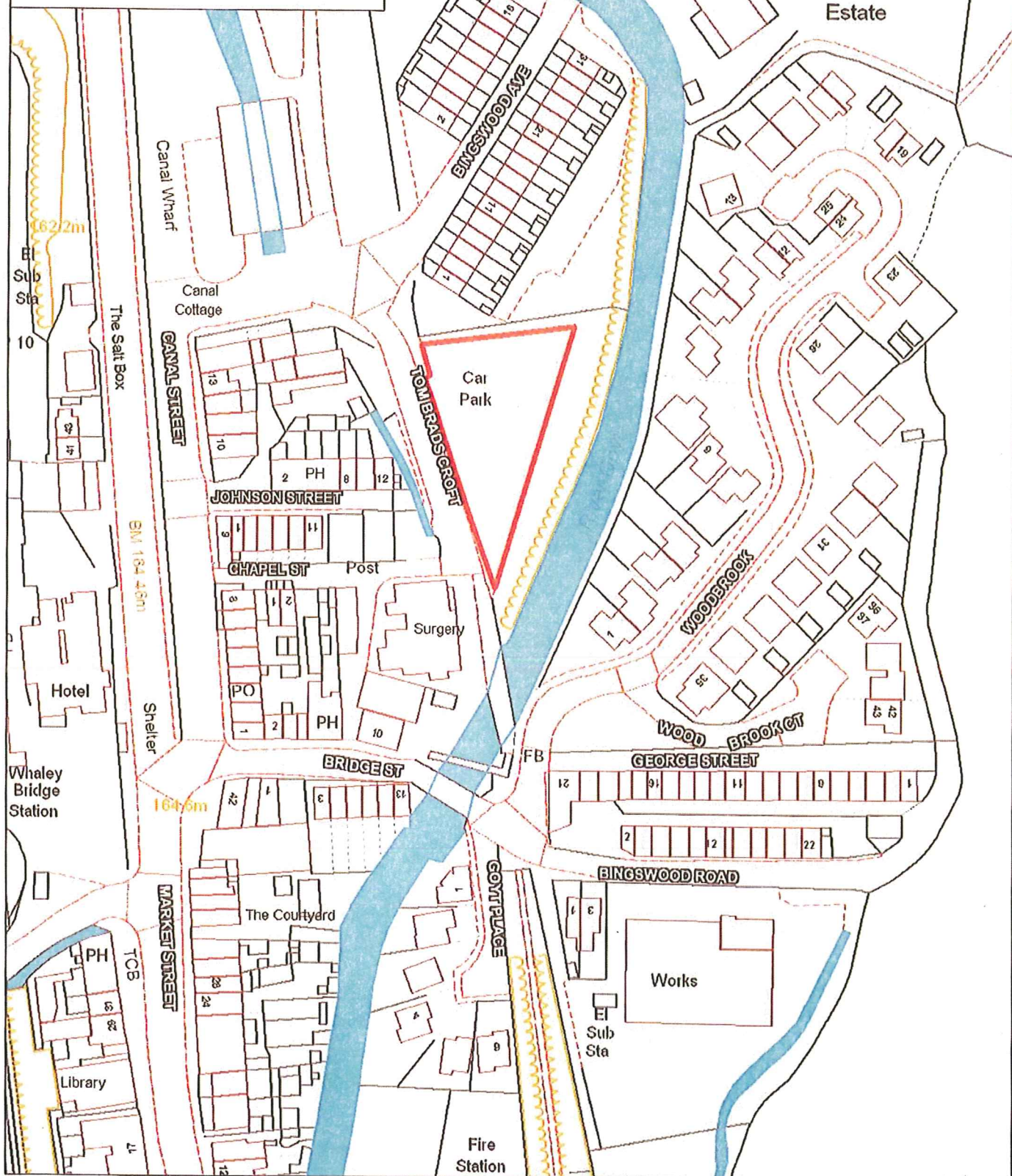
High Peak Borough Council (Off-Street  
Parking Places) (Civil Enforcement  
and Consolidation) Order 2008

Canal Street, Whaley Bridge.

Plan Number 20

Grid Ref : 401,227 - 381,565

Date 02/10/2008



Reproduced from Ordnance Survey digital map data

© Crown copyright 2000. All rights reserved. High Peak Borough Council License No. 10018411

Scale 1: 1250

NORTH



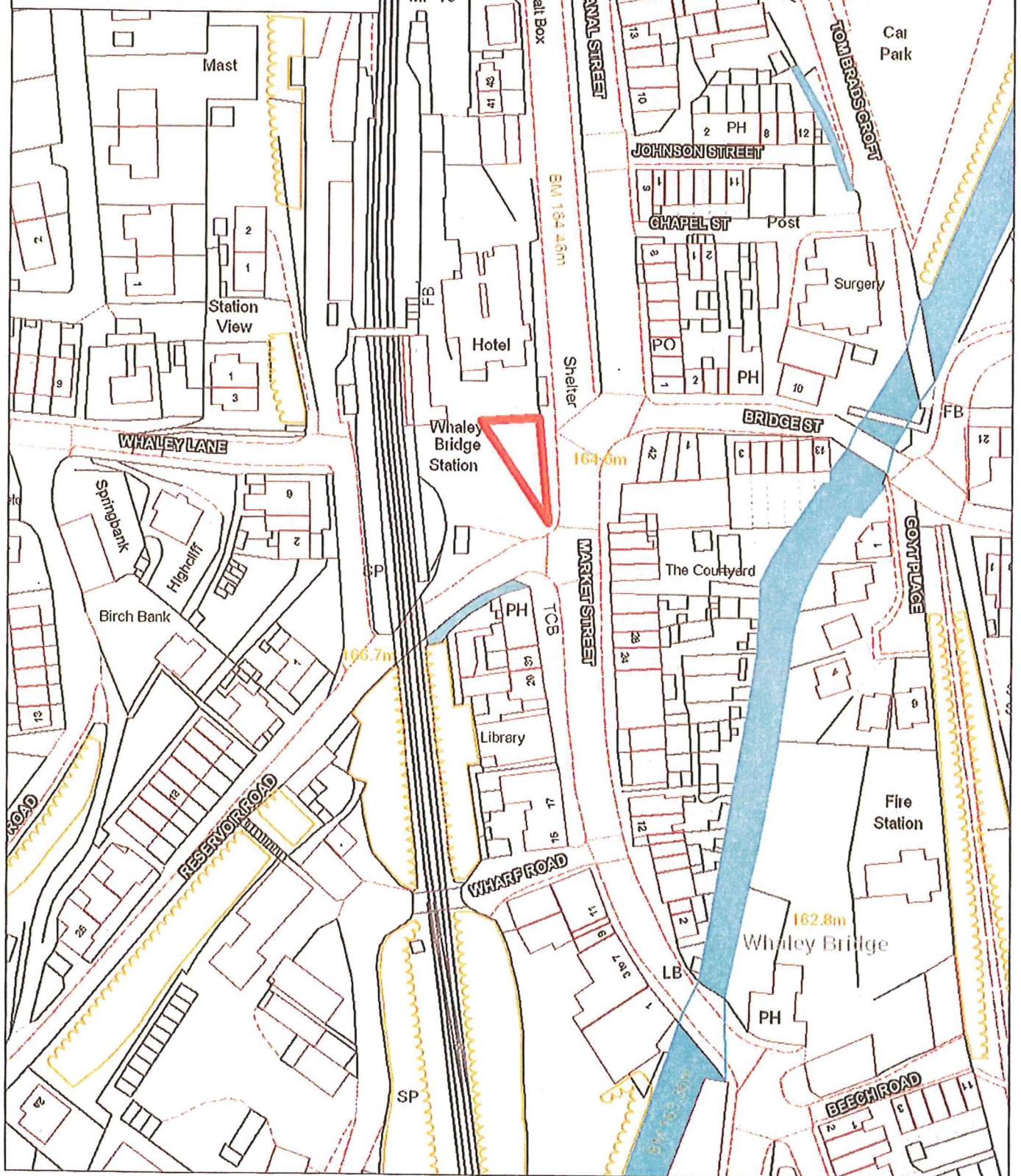
# High Peak District Council

High Peak District Council (Off Street  
Parking Places) (Civil Enforcement  
and consolidation) Order 2008  
Station Car Park, Whaley Bridge

Plan Number 21

Grid Ref : 401,145 - 381,449

Dated 02/10/2008





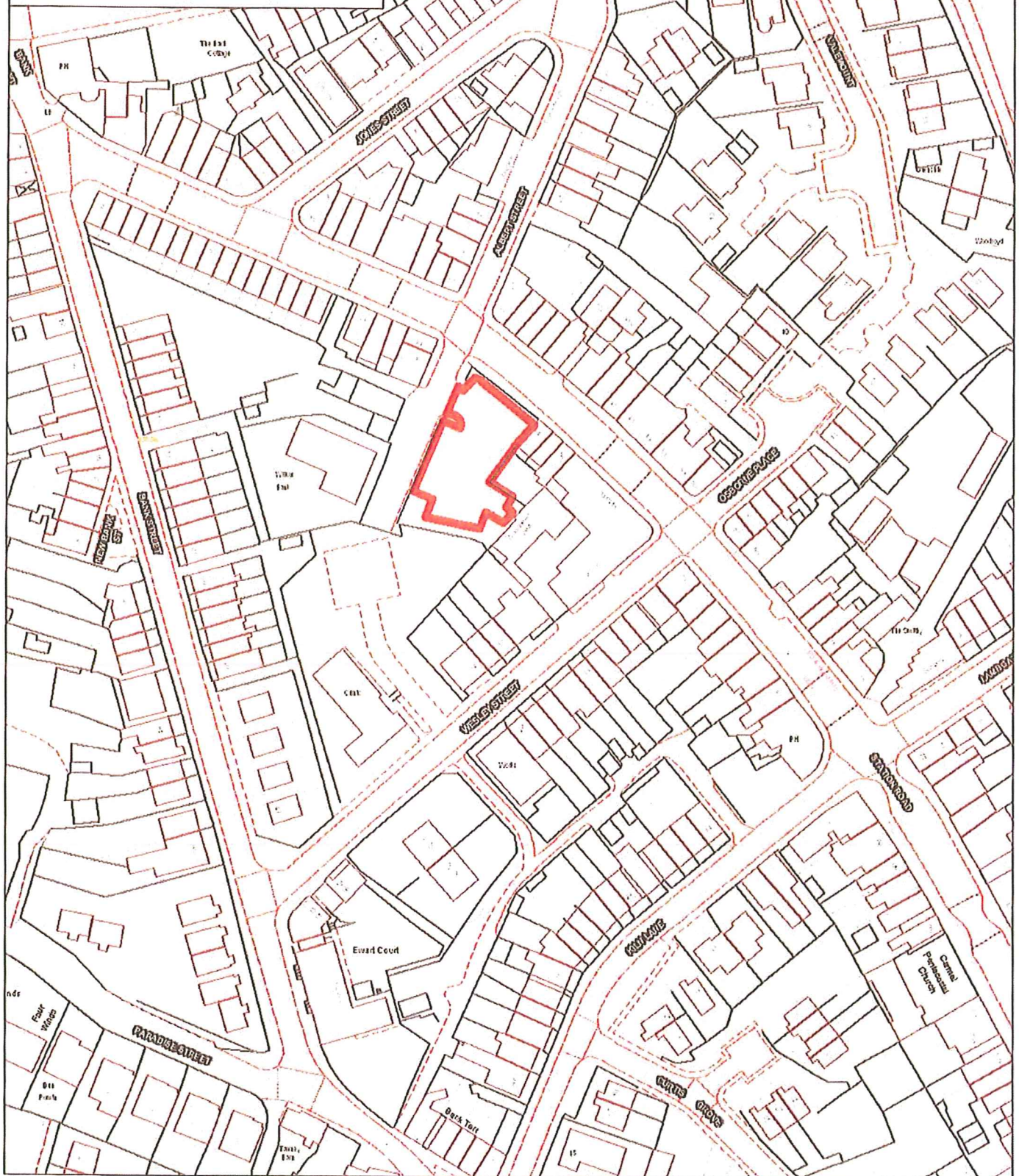
**High Peak Borough Council  
High Peak Borough Council (Off-Street  
Parking Places) (Civil Enforcement  
and Consolidation) Order 2008**

Albert Street, Hadfield.

Plan Number 22

Grid Ref : 402,103 - 396,352

Date 02/10/2008



Reproduced from Ordnance Survey digital map data

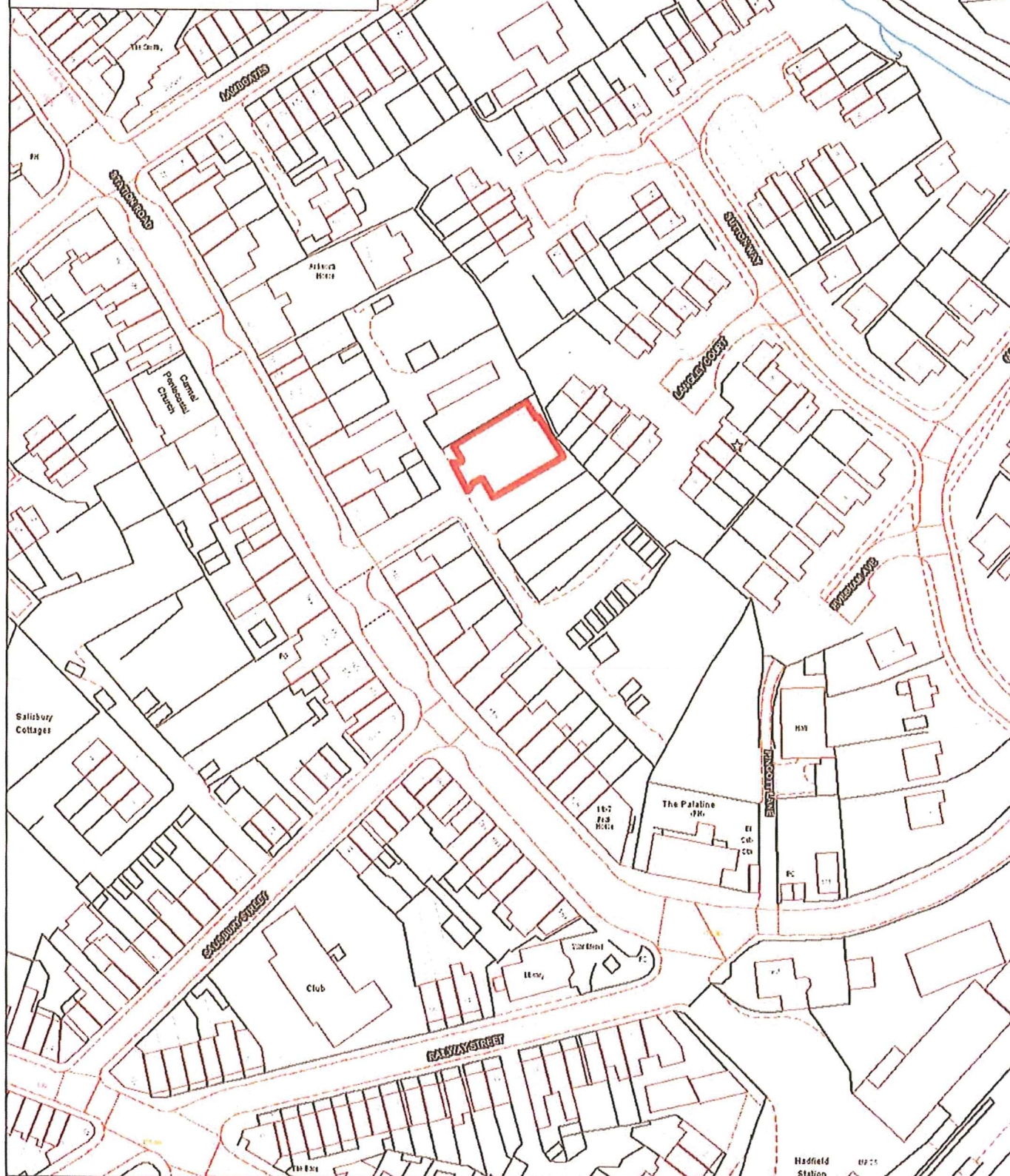
© Crown copyright 2000. All rights reserved. High Peak Borough Council License No. 10018411

Scale 1: 1250

**NORTH**



High Peak District Council  
High Peak District Council (Off Street  
Parking Places) (Civil Enforcement  
and consolidation) Order 2008  
Station Car Park, Hadfield  
Plan Number 23  
Grid Ref : 402,293 - 396,192  
Dated 02/10/2008



**SCHEDULE 2  
CHARGES FOR PARKING**

Name of Parking Place (and as shown on the Plans)	Days of operation of Parking	Hours of operation of Parking	Maximum period for which Vehicles may Park	Scale of charges for Parking
<b>MARKET PLACE CAR PARK, BUXTON</b>	All days	All hours	Monday to Sunday Twenty four hour parking	<p>Between 8.00 a.m and 6.00 p.m Monday to Sunday –</p> <p>0 – 1 hrs - £1.00 1 - 2 hrs - £1.60 2 - 4 hrs - £2.90 Over 4 hrs - £3.70</p> <p>Monday to Sunday 24 hours - £3.70</p> <p>Quarterly permit - £105</p> <p>Rover Pass 3 days - £10.00 7 days - £20.00</p>
<b>MARKET STREET CAR PARK, BUXTON</b>	All days	All hours	Between 8.00 a.m and 6.00 p.m Monday to Sunday Maximum ten hours	<p>Between 8.00 a.m and 6.00 p.m Monday to Sunday –</p> <p>0 – 1 hrs - £1.00 1 - 2 hrs - £1.60 2 - 4 hrs - £2.90 Over 4 hrs - £3.70</p>

Name of Parking Place (and as shown on the Plans)	Days of operation of Parking	Hours of operation of Parking	Maximum period for which Vehicles may Park	Scale of charges for Parking
				Quarterly permit - £105  Rover Pass 3 days - £10.00 7 days - £20.00
THE SLOPES CAR PARK, BUXTON	All days	All hours	Between 8.00 a.m and 6.00 p.m Monday to Sunday Maximum ten hours	Between 8.00 a.m and 6.00 p.m Monday to Sunday –  0 – 1 hrs - £1.00 1 - 2 hrs - £1.60 2 - 4 hrs - £2.90 Over 4 hrs - £3.70  Quarterly permit - £105  Rover Pass 3 days - £10.00 7 days - £20.00
BRIDGE STREET CAR PARK, BUXTON	All days	All hours	Between 8.00 a.m and 6.00 p.m Monday to Sunday Maximum ten hours	Between 8.00 a.m and 6.00 p.m Monday to Sunday –  0 – 1 hrs - £1.00 1 - 2 hrs - £1.60 2 - 4 hrs - £2.90 Over 4 hrs - £3.70

Name of Parking Place (and as shown on the Plans)	Days of operation of Parking	Hours of operation of Parking	Maximum period for which Vehicles may Park	Scale of charges for Parking
				Quarterly permit - £105  Rover Pass 3 days - £10.00 7 days - £20.00
<b>SPRING GARDENS AND WYE STREET CAR PARK, BUXTON</b>	All days	All hours	Between 8.00 a.m and 6.00 p.m Monday to Sunday Maximum four hours	Between 8.00 a.m and 6.00 p.m Monday to Sunday –  0 – 1 hrs - £1.00 1 - 2 hrs - £1.60 2 - 4 hrs - £2.90  Rover Pass 3 days - £10.00 7 days - £20.00
<b>PAVILION GARDENS CAR PARK, BUXTON</b>	All days	All hours	Between 8.00 a.m and 6.00 p.m Monday to Sunday Maximum ten hours	Between 8.00 a.m and 6.00 p.m Monday to Sunday –  0 – 1 hrs - £1.40 1 - 2 hrs - £2.00 2 - 4 hrs - £3.40 Over 4 hrs - £5.20  Quarterly permit - £105  Between June to September (Mon-Fri)

Name of Parking Place (and as shown on the Plans)	Days of operation of Parking	Hours of operation of Parking	Maximum period for which Vehicles may Park	Scale of charges for Parking
				Quarterly permit - £105  Rover Pass 3 days - £10.00 7 days - £20.00
<b>SPRING GARDENS AND WYE STREET CAR PARK, BUXTON</b>	All days	All hours	Between 8.00 a.m and 6.00 p.m Monday to Sunday Maximum four hours	Between 8.00 a.m and 6.00 p.m Monday to Sunday –  0 – 1 hrs - £1.00 1 - 2 hrs - £1.60 2 - 4 hrs - £2.90  Rover Pass 3 days - £10.00 7 days - £20.00
<b>PAVILION GARDENS CAR PARK, BUXTON</b>	All days	All hours	Between 8.00 a.m and 6.00 p.m Monday to Sunday Maximum ten hours	Between 8.00 a.m and 6.00 p.m Monday to Sunday –  0 – 1 hrs - £1.40 1 - 2 hrs - £2.00 2 - 4 hrs - £3.40 Over 4 hrs - £5.20  Quarterly permit - £105  Between June to September (Mon-Fri)



Name of Parking Place (and as shown on the Plans)	Days of operation of Parking	Hours of operation of Parking	Maximum period for which Vehicles may Park	Scale of charges for Parking
				<p>only. For use on upper deck of car park only. Derby University Staff / Student permit - £155 Other users - £180</p> <p>Rover Pass 3 days - £10.00 7 days - £20.00</p>
SOUTH STREET CAR PARK, BUXTON	All days	All hours	Between 8.00 a.m and 6.00 p.m Monday to Sunday Maximum ten hours	<p>Between 8.00 a.m and 6.00 p.m Monday to Sunday –</p> <p>0 – 1 hrs - £1.00 1 - 2 hrs - £1.60 2 - 4 hrs - £2.90 Over 4 hrs - £3.70</p> <p>Quarterly permit - £105</p> <p>Rover Pass 3 days - £10.00 7 days - £20.00</p>
SYLVAN CAR PARK, BUXTON	All days	All hours	Between 8.00 a.m and 6.00 p.m Monday to Sunday Maximum ten hours	<p>Between 8.00 a.m and 6.00 p.m Monday to Sunday –</p> <p>0 – 1 hrs - £1.00</p>

Name of Parking Place (and as shown on the Plans)	Days of operation of Parking	Hours of operation of Parking	Maximum period for which Vehicles may Park	Scale of charges for Parking
			Overnight parking permitted for maximum 10 hours	1 - 2 hrs - £1.60 2 - 4 hrs - £2.90 Over 4 hrs - £3.70  Quarterly permit - £105  COACHES 0 - 4 hrs - £5.20 Over 4 hrs - £10.20  GOODS VEHICLES Over 4 hrs - £6.20  Rover Pass 3 days - £10.00 7 days - £20.00
<b>MUNICIPAL BUILDINGS, GLOSSOP</b>	All days	All hours	Between 8.00 a.m and 6.00 p.m Monday to Sunday Maximum four hours	Between 8.00 a.m and 6.00 p.m Monday to Sunday –  0 – 1 hrs - £0.80 1 - 2 hrs - £1.30 2 - 4 hrs - £2.40  Rover Pass 3 days - £10.00 7 days - £20.00



Name of Parking Place (and as shown on the Plans)	Days of operation of Parking	Hours of operation of Parking	Maximum period for which Vehicles may Park	Scale of charges for Parking
<b>BERNARD STREET, GLOSSOP</b>	All days	All hours	Between 8.00 a.m and 6.00 p.m Monday to Sunday Maximum four hours	Between 8.00 a.m and 6.00 p.m Monday to Sunday –  0 – 1 hrs - £0.80 1 - 2 hrs - £1.30 2 - 4 hrs - £2.40  Quarterly permit - £55  Rover Pass 3 days - £10.00 7 days - £20.00
<b>EDWARD STREET, GLOSSOP</b>	All days	All hours	Between 8.00 a.m and 6.00 p.m Monday to Sunday Maximum ten hours	Between 8.00 a.m and 6.00 p.m Monday to Sunday –  0 – 1 hrs - £0.80 1 - 2 hrs - £1.30 2 - 4 hrs - £2.40 Over 4 hrs - £2.60  Quarterly permit - £55  Rover Pass 3 days - £10.00 7 days - £20.00
<b>MARKET STREET,</b>	All days	All hours	Between 8.00 a.m and 6.00 p.m	Between 8.00 a.m and 6.00 p.m

Name of Parking Place (and as shown on the Plans)	Days of operation of Parking	Hours of operation of Parking	Maximum period for which Vehicles may Park	Scale of charges for Parking
<b>NEW MILLS</b>			Monday to Sunday Maximum ten hours	<p>Monday to Sunday –</p> <p>0 – 1 hrs - £0.00  1 - 2 hrs - £0.70  2 - 4 hrs - £1.80  Over 4 hrs - £2.40</p> <p>Quarterly permit - £105</p> <p>Rover Pass  3 days - £10.00  7 days - £20.00</p>
<b>TOWN HALL CAR PARK, NEW MILLS</b>	All days	All hours	Between 8.00 a.m and 6.00 p.m Monday to Sunday Maximum ten hours	<p>Between 8.00 a.m and 6.00 p.m  Monday to Sunday –</p> <p>0 – 1 hrs - £0.00  1 - 2 hrs - £0.70  2 - 4 hrs - £1.80  Over 4 hrs - £2.40</p> <p>Quarterly permit - £105</p> <p>Rover Pass  3 days - £10.00  7 days - £20.00</p>
<b>TORR TOP CAR</b>	All days	All hours	Between 8.00 a.m and 6.00 p.m	Between 8.00 a.m and 6.00 p.m

Name of Parking Place (and as shown on the Plans)	Days of operation of Parking	Hours of operation of Parking	Maximum period for which Vehicles may Park	Scale of charges for Parking
PARK, NEW MILLS			Monday to Sunday Maximum ten hours	<p>Monday to Sunday –</p> <p>0 – 1 hrs - £0.00  1 - 2 hrs - £0.70  2 - 4 hrs - £1.80  Over 4 hrs - £2.40</p> <p>Quarterly permit - £80</p> <p>Rover Pass  3 days - £10.00  7 days - £20.00</p>
HOPE VILLAGE CAR PARK, HOPE VALLEY	All days	All hours	Monday to Sunday Twenty four hour parking	<p>Monday to Sunday –</p> <p>0 – 1 hrs - £1.20  1 - 2 hrs - £2.00  2 - 4 hrs - £3.40  Over 4 hrs - £5.20 (up to 10 hrs)  24 hrs - £6.20</p> <p>Quarterly permit - £105</p> <p>Rover Pass  3 days - £10.00  7 days - £20.00</p>
CASTLETON, HOPE	All days	All hours	Monday to Sunday	Monday to Sunday –

Name of Parking Place (and as shown on the Plans)	Days of operation of Parking	Hours of operation of Parking	Maximum period for which Vehicles may Park	Scale of charges for Parking
VALLEY			Twenty four hour parking	0 – 1 hrs - £1.20 1 - 2 hrs - £2.00 2 - 4 hrs - £3.40 Over 4 hrs - £5.20 (up to 10 hours) 24 hrs - £6.20  Quarterly permit - £105  COACHES 0 – 4 hrs - £5.00 Over 4 hrs - £10.20  Rover Pass 3 days - £10.00 7 days - £20.00
EDALE CAR PARK, HOPE VALLEY	All days	All hours	Monday to Sunday Twenty four hour parking	Monday to Sunday –  0 – 1 hrs - £1.20 1 - 2 hrs - £2.00 2 - 4 hrs - £3.40 Over 4 hrs - £5.20 (up to 10 hours) 24 hrs - £6.20  Quarterly permit - £105  COACHES 0 – 4 hrs - £5.00

Name of Parking Place (and as shown on the Plans)	Days of operation of Parking	Hours of operation of Parking	Maximum period for which Vehicles may Park	Scale of charges for Parking
				Over 4 hrs - £10.20  Rover Pass 3 days - £10.00 7 days - £20.00
THORNBROOK ROAD, CHAPEL-EN-LE-FRITH	All days	All hours	Between 8.00 a.m and 6.00 p.m Monday to Sunday Maximum ten hours	No charge
MIRY MEADOW, CHAPEL-EN-LE-FRITH	All days	All hours	Between 8.00 a.m and 6.00 p.m Monday to Sunday Maximum ten hours	No charge
CANAL STREET, WHALEY BRIDGE	All days	All hours	Between 8.00 a.m and 6.00 p.m Monday to Sunday Maximum ten hours	No charge
STATION CAR PARK, WHALEY BRIDGE	All days	All hours	Between 8.00 a.m and 6.00 p.m Monday to Sunday Maximum ten hours	No charge
ALBERT STREET, HADFIELD	All days	All hours	Between 8.00 a.m and 6.00 p.m Monday to Sunday Maximum ten hours	No charge



Name of Parking Place (and as shown on the Plans)	Days of operation of Parking	Hours of operation of Parking	Maximum period for which Vehicles may Park	Scale of charges for Parking
STATION ROAD, HADFIELD	All days	All hours	Between 8.00 a.m and 6.00 p.m Monday to Sunday Maximum ten hours	No charge